



Trombone 1

117

126

145

159

177

183 wenig verbreitern

II

185 Ruhig bewegt (♩.=bis 50)

TACET

III

251 Fuge: Massig bewegt, heiter (♩=100)

31

*mute*

*mf*

288

2

298

3

309

318

8

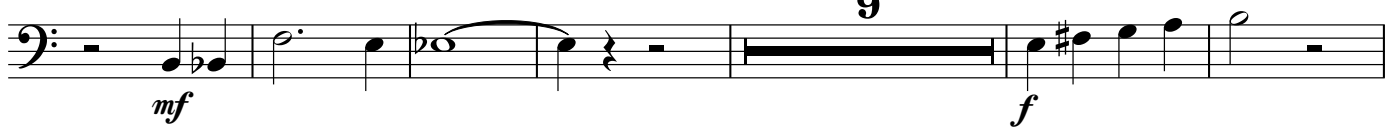
332

4

2



141



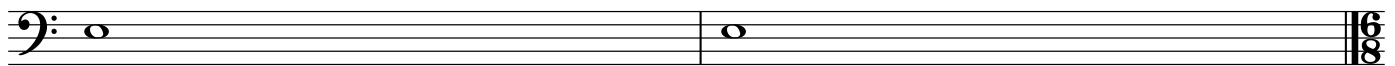
156



177



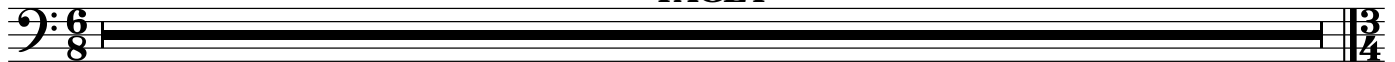
183 wenig verbreitern



II

185 Ruhig bewegt (♩=bis 50)

TACET



III

251 Fuge: Massig bewegt, heiter (♩=100)



290



300



310

18



334

2



Bass Trombone

# Organ Sonata No. 2

## I.

Hindemith/Johnson

Lebhaft [ $\text{♩}=92$ ]

8

15

29

33

67

4

77

77

18

11

110

5

4

123

13

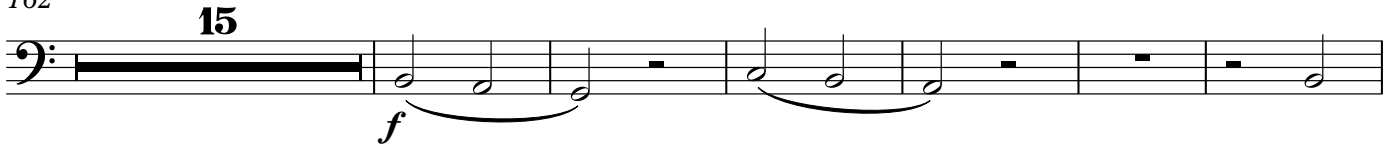
141

9

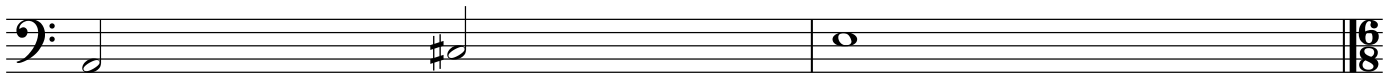
156



162



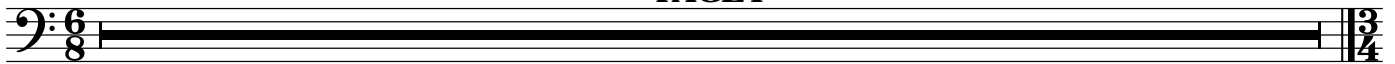
183 wenig verbreitern



II

185 Ruhig bewegt (♩.=bis 50)

TACET



III

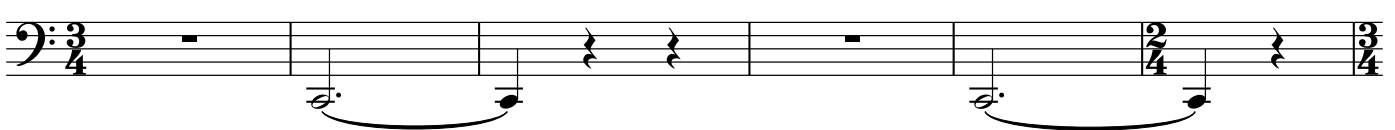
251 Fuge: Massig bewegt, heiter (♩.=100)



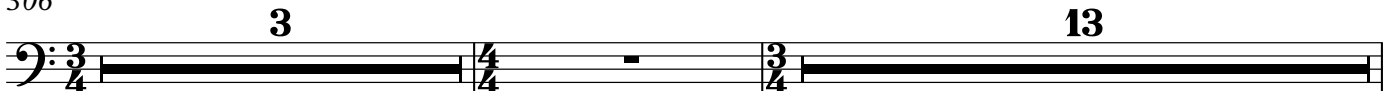
291



300



306





4

Bass Trombone

323



333

