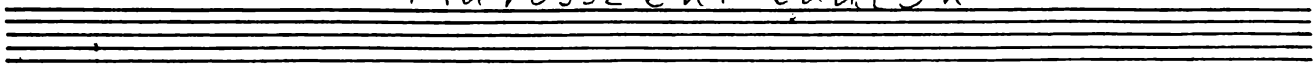


Marosszéki táncok Kodály Zoltán



Maestoso

Batteria

Timpani

Temp.

Ptti.

29. Con moto

Ptti.

Ptti.
Gr. C.

73. 13

Tempo I poco più largo

Temp.

92. 6 Sostenuto

Temp.

108. Moderato 48

Tempo I. g

Temp.

167. tr tr

170. a tempo

Gran Cassa.

pp

Gr. C.

174.

Ptti.

181. Vivace 42

Ptti.

229.

f

Tamb. Picc.

236. *tr*

Piatti
Tamb.
picc.

240. *tr*

Piatti
Tamb.
picc.

247.

Tamb.
picc.

Ptti

gr. C.

pp *cresc.*

p *tr* *cresc.*

Tempo I.

Timpanti

254 | *sf* *p* *mf* *p* *pp*

Timp.

Sostenuto Largo

266 Allegro con brio

Timp

272.

Timp.

278.

Timp

g

tr
sf

Batteria

299 *tr* **300** *tr*

Timp. *sf* > **1** *sf* > *pp*

Tamb. picc. *pp*

gr. C. *pp*

305

Timp.

Tamb. picc. *cresc.*

gr. C. *cresc.*

310 *pochiss. tempo* **320** *sost.*

Timp. **7** **1** *mf*

Tamb. picc. **7** **1** *mf*

gr. C. **7** **1** *mf*

321

Timp.

Tamb. picc. *tr* *ff*

gr. C. *f*

325

Timp. *tr* **1** *tr*

Tamb. picc. > **1** >

gr. C. **1**

330

Batteria

1

330-333

Timp. **1**

Tamb. picc. **1** *f* *cresc.*

gr. C. **1** *f* *f* *cresc.*

Detailed description: This system covers measures 330 to 333. The timpani part (Timp.) has a '1' above the first measure. The snare drum (Tamb. picc.) and gong (gr. C.) parts both start with a '1' above the first measure. The snare drum part features a continuous eighth-note pattern starting at measure 331, with a dynamic of *f* and a *cresc.* marking. The gong part has a single note in measure 330, followed by rests, and then a note in measure 333 with a dynamic of *f* and a *cresc.* marking.

334

334-337

Timp.

Tamb. picc. *tr* *tr* *tr* *sff pp* *f*

Ptti. *sff p pp*

gr. C. *sff secco* *sff secco* *f*

Detailed description: This system covers measures 334 to 337. The timpani part (Timp.) has accents (>) above notes in measures 334 and 335. The snare drum (Tamb. picc.) part has trill markings (*tr*) above notes in measures 334 and 335, followed by a *sff pp* dynamic in measure 336 and a *f* dynamic in measure 337. The piccolo (Ptti.) part has a *sff p pp* dynamic in measure 336. The gong (gr. C.) part has a *sff secco* dynamic in measure 336 and a *f* dynamic in measure 337.

340

339

339-342

Timp.

Tamb. picc. *cresc.* *tr* *tr* *tr* *ff* *fff*

Ptti. *fff*

gr. C. *fff* *fff*

Detailed description: This system covers measures 339 to 342. The snare drum (Tamb. picc.) part has a *cresc.* marking above a note in measure 339, followed by trill markings (*tr*) above notes in measures 340 and 341, and *ff* and *fff* dynamics in measures 341 and 342 respectively. The piccolo (Ptti.) and gong (gr. C.) parts both have *fff* dynamics in measure 341.