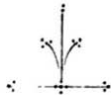
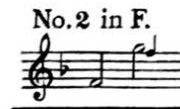
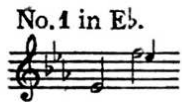
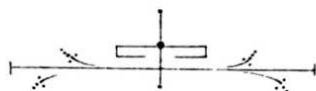


M. Orchard.



# DOWN IN THE WOODS



SONG

WORDS BY

EDWARD LOCKTON



MUSIC BY

VALENTINE HEMERY

PRICE 2/- NET

LONDON,

JOSEPH WILLIAMS, LIMITED,  
32, GREAT PORTLAND STREET, W. 1.

U. S. A.

THE E. C. SCHIRMER MUSIC CO.

*Valentine Hemery*

## Down in the Woods.

Who was it sang to me down in the woods?  
Was it the spring? Ah! no!  
For the streams were bound by an icy hand,  
And the moss covered deep in snow!

Who was it sang to me down in the woods?  
Was it a thrush! Ah! no!  
Could a bird be as blithe and gay  
When cold winter winds did blow?

Who was it sang to me down in the woods  
A melody sweet and true?  
'Twas my heart's fair spring, 'twas my singing bird,  
It was you, my beloved, it was you!

*EDWARD LOCKTON.*

# DOWN IN THE WOODS.

Words by  
EDWARD LOCKTON.

Music by  
VALENTINE HEMERY.

Moderato con anima.

VOICE. 

PIANO. 

  
Who was it sang to me



  
down in the woods? Was it the spring? Ah!



*a tempo*

no! For the streams were bound by an

*animato*

*rit.*

i - - cy hand, And the moss cov - er'd deep in

*p* *rit.*

*a tempo*

snow!

*p a tempo*

*a tempo*

Who was it sang to me down in the woods?

*p rit.* *a tempo*

*parlando* *f* *a tempo* *f*

Was it a thrush? Ah! no! Could a bird be as

*p slentando*

blithe and gay When cold win - ter winds did

*slentando p.*

*a tempo*

blow?

*p a tempo cresc. accel.*

*animato*

Who was it sang to me

*ff f animato*

down in the woods A mel - o - dy sweet and

*rit.*

true? 'Twas my heart's fair spring, 'twas

*f a tempo*

my sing - ing bird, It was you, — my be - lov - ed, it was

*slentando* *f rit.* *allargando* *rit.* *colla voce* *ff*

you!

*ff presto* *ff* *rall.*

# SELECTED POPULAR SONGS.

Price 2/- nett each.

**The Sleepy Song.** Words by JOSEPHINE DASKAM. Music by KATHERINE BARRY. KEYS D, F, G.

*Andante non troppo.*

As soon as the fire burns red and low, And the house up - stairs is still, See sings

Musical score for 'The Sleepy Song' featuring a vocal line and piano accompaniment. The tempo is 'Andante non troppo'. The lyrics are: 'As soon as the fire burns red and low, And the house up - stairs is still, See sings'.

**Sympathy.** Words by MARY L. HAY. Music by CHARLES MARSHALL. KEYS D, Eb, F, G.

*Andante espress.*

Give me thy hands and draw me to thy heart; Give me one look then all my doubts de - part, For I have seen the sym - pa - thy that

Musical score for 'Sympathy' featuring a vocal line and piano accompaniment. The tempo is 'Andante espress.'. The lyrics are: 'Give me thy hands and draw me to thy heart; Give me one look then all my doubts de - part, For I have seen the sym - pa - thy that'.

**Meditation.** Words by M.C. GILLINGTON. Music by C. CHAMINADE. KEYS Bb, C, D, E.

*Andante*

Darkness lies on val - ley and wold, Clouds the light of Heaven co - ver, On - ly the shepherd wakes watching o - ver Flocks that are housed in fold.

Musical score for 'Meditation' featuring a vocal line and piano accompaniment. The tempo is 'Andante'. The lyrics are: 'Darkness lies on val - ley and wold, Clouds the light of Heaven co - ver, On - ly the shepherd wakes watching o - ver Flocks that are housed in fold.'.

**The Rose of Love.** Words by P. J. O'REILLY. Music by ALAN WRIGHT. KEYS Bb, C, Eb.

*Moderato.*

With - in my - heart there lies a with - ered rose That once in beau - ty bloomed, a flow'r di - vine The rose of love

Musical score for 'The Rose of Love' featuring a vocal line and piano accompaniment. The tempo is 'Moderato'. The lyrics are: 'With - in my - heart there lies a with - ered rose That once in beau - ty bloomed, a flow'r di - vine The rose of love'.

**The Song of Florian.** Words by M.C. GILLINGTON. Music by BENJAMIN GODARD. KEYS Bb, C, D, Eb.

*Allegretto.*

At morn - ing light, when lambs a - wa - - ken, And wa - ter li - lies o - pen wide, A - long the mountain's grassy

Musical score for 'The Song of Florian' featuring a vocal line and piano accompaniment. The tempo is 'Allegretto'. The lyrics are: 'At morn - ing light, when lambs a - wa - - ken, And wa - ter li - lies o - pen wide, A - long the mountain's grassy'.

**The Song of the Hours.** Words by RUTH RUTHERFORD. Music by GRACE MILLER. KEYS Eb, G.

*Allegro.*

The birds sing a song to the flow'rs, And the flow'rs whisper it to the trees. And my heart

Musical score for 'The Song of the Hours' featuring a vocal line and piano accompaniment. The tempo is 'Allegro'. The lyrics are: 'The birds sing a song to the flow'rs, And the flow'rs whisper it to the trees. And my heart'.

**Constancy.** Words by H. ERNEST HUNT. Music by DOROTHY HILL. KEYS Ab, Bb, C.

*Moderato con espress.*

Two lips to ask of thee, All that life may: Two arms to wel - come thee, Ev - er to

Musical score for 'Constancy' featuring a vocal line and piano accompaniment. The tempo is 'Moderato con espress.'. The lyrics are: 'Two lips to ask of thee, All that life may: Two arms to wel - come thee, Ev - er to'.