

# Suite IV

BWV 1010

## 1. Prélude

5

10

15

20

25

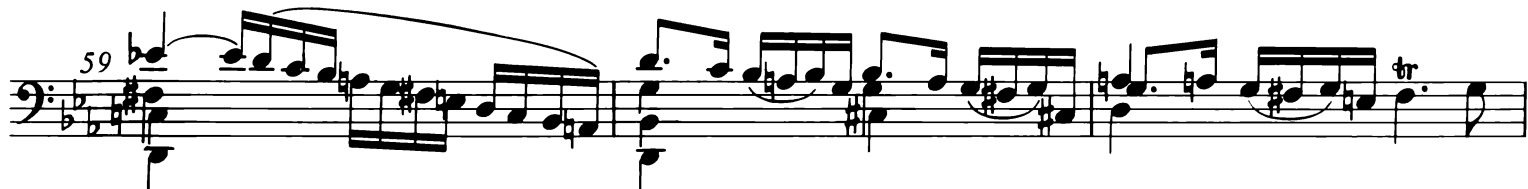
30

34

39

44

48



## 2. Allemande

3

5

7

9

11

13

15

17

19

21

23

25

27

29

31

33

35

37

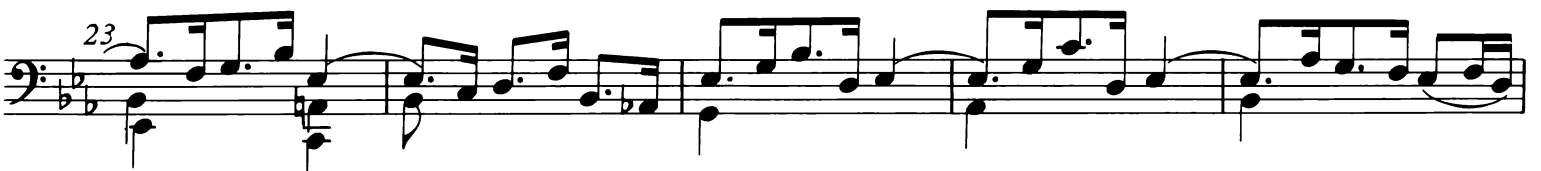
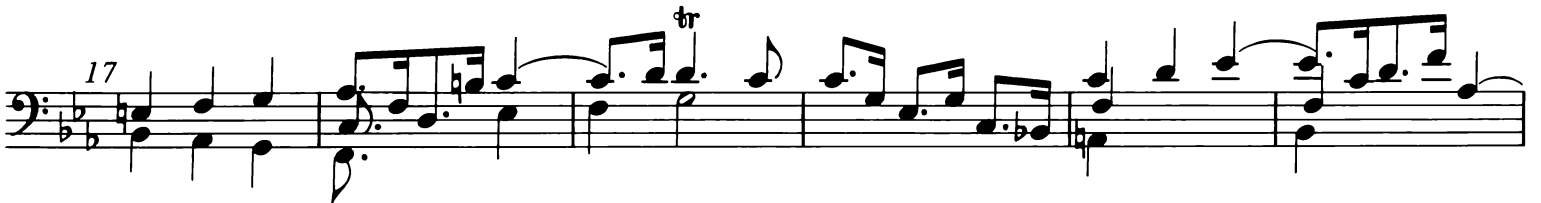
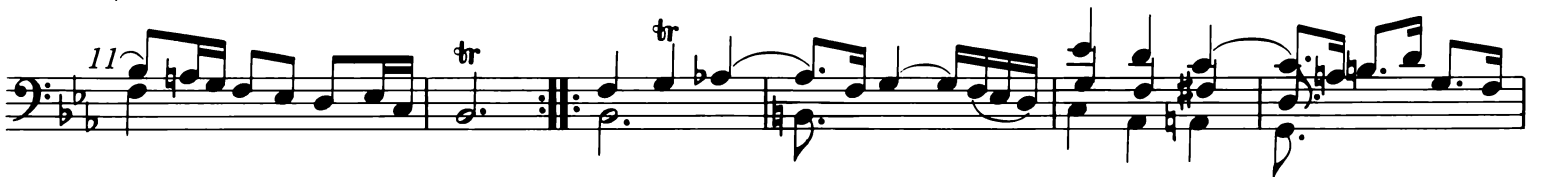
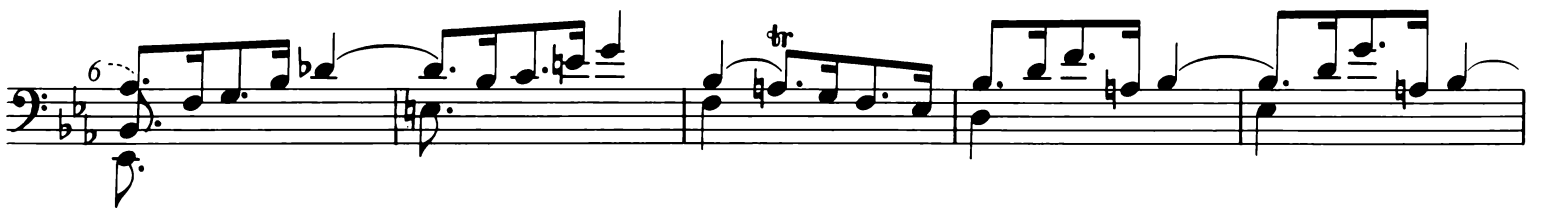
39

## 3. Courante

The musical score for "3. Courante" is written in bass clef, 3/4 time, and B-flat major. It consists of ten staves of music. The key signature has two flats (B-flat and E-flat). The time signature is 3/4. The score includes various musical notations such as eighth and sixteenth notes, rests, and ornaments (trills and mordents). Measure numbers 4, 8, 12, 17, 22, 27, 31, 37, 42, and 45 are indicated at the beginning of their respective staves. The piece concludes with a double bar line and repeat dots at the end of the final staff.



#### 4. Sarabande



## 5. Bourrée I



28

31

34

36

39

42

45

6. Bourrée II

6



## 7. Gigue

The musical score for "7. Gigue" is written in bass clef with a 12/8 time signature and a key signature of two flats (B-flat and E-flat). The piece consists of ten staves of music, each starting with a measure number (1, 3, 5, 7, 9, 11, 13, 15, 17, 19). The notation includes eighth and sixteenth notes, often beamed together, and is frequently accented. Slurs are used to group notes across measures. The piece concludes with a double bar line and repeat dots at the end of the tenth staff.

