

Contrabajo

Concert for Piano, Flute, Cello and Strings

Vincent D'Indy  
op.89

I.

Modéré, mais bien décidé

1

2

3

4

5

6

7

8

9

10

11

12

13

14

15

16

17

18

19

20

21

22

23

24

25

26

27

28

29

30

31

32

33

34

35

36

*pizz.*

*f*

*f*

*dim.*

*p*

*mf*

*mf*

*cresc.*

*f*

*f*

*p*

*f*

*p*

*f*

*f*

*p*

*f*

*p*

*mf*

*p*

*p*

38

*f* *mf* *f*

43

4

*f* *p* *f*

48

Un peu élargi

5

5 au Mouvt.

*pp* *cresc.* *f*

57

pizz. arco

*ff* *f* *ff*

61

6

arco pizz. arco pizz. arco pizz. arco pizz.

*pp* *f* *pp* *f* *p* *f* *p* *f*

65

7

arco

en aug - men - tant

*f* *dim.*

69

2

*p* *f* *dim.*

74

8

*p* *p*

79

*mf* *p* *dim.* *un peu plus f* *p*

83 9 10

*f*

90

*p*

Detailed description: Musical staff 83-90. Measure 83 starts with a circled '9'. The staff contains eighth notes with accidentals. Measure 89 has a circled '10'. The staff ends with a double bar line. Dynamics include *f* and *p*.

94 11

*f* *ff*

101 12

*dim. p* *mf < sfz >* *sfz >* *sfz >* *f*

Detailed description: Musical staff 94-101. Measure 94 has a circled '11'. The staff contains quarter notes and eighth notes. Measure 101 has a circled '12'. Dynamics include *f*, *ff*, *dim. p*, *mf < sfz >*, *sfz >*, and *f*.

106 *retenu* 13

*ff* *ff* *ff* *>*

110 *Un peu élargi* *Calme* 14 *au Mouvt.*

*pp* *f* *pp* *f*

Detailed description: Musical staff 106-110. Measure 106 has a circled '13'. The staff contains quarter notes with accents. Measure 110 has a circled '14'. Dynamics include *ff*, *pp*, and *f*. Performance instructions include *retenu*, *Un peu élargi*, *Calme*, and *au Mouvt.*

120 15

*pp en augm. beaucoup ff* *f*

123

*f*

Detailed description: Musical staff 120-123. Measure 120 has a circled '15'. The staff contains eighth notes. Measure 123 has a circled '16'. Dynamics include *pp en augm. beaucoup ff* and *f*.

127

*ff*

130

*ff*

Detailed description: Musical staff 127-130. Measure 127 has a circled '17'. The staff contains eighth notes. Measure 130 has a circled '18'. Dynamics include *ff*.

130

*ff*

Detailed description: Musical staff 130-133. Measure 130 has a circled '19'. The staff contains quarter notes with accents. Measure 133 has a circled '20'. Dynamics include *ff*.

## II.

Lent et expressif  
10

16

4



19

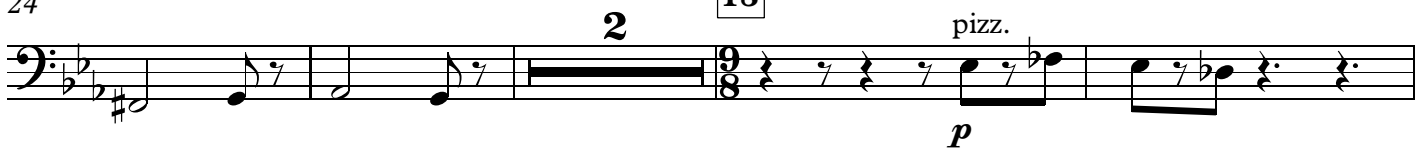
17



24

18

2



30

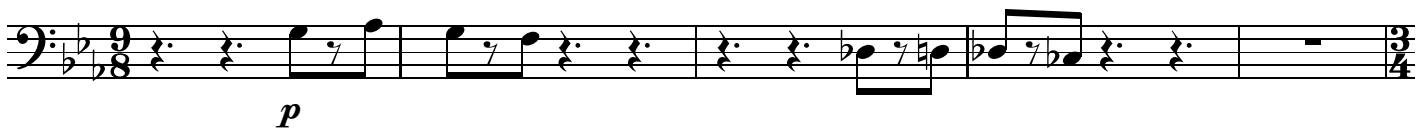
19



34



38



43

20

2

arco

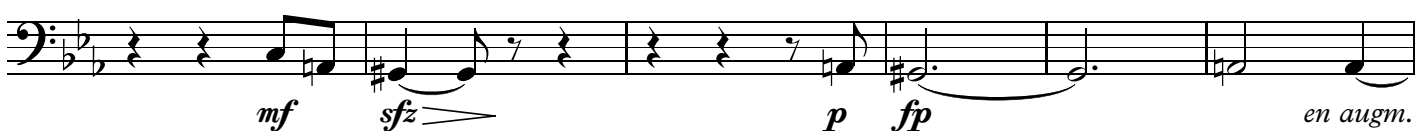
21

2



50

en serrant un peu



56 **Le double plus vite** (♩=♩) **4**

*p* *f*

64 **22** **2**

*f*

71 **un peu retenu** **23** **au Mouvt.** **6** **2** **5**

*f*

87 **pizz.** **arco** **p** **sfz**

*p* *sfz*

93 **un peu retenu** **24** **Le double plus lente** (♩=♩) **9** **2** **2**

*mf*

107 **mf** **mf**

*mf* *mf*

112 **un peu ret.** **pizz.** **mf** **en aug - men - tant** **3** **cresc.** **3** **ff**

*mf* *en aug - men - tant* *3* *cresc.* *3* *ff*

116 **25** **au Mouvt.** **arco** **pizz.** **f** **p** **3**

*f* *pizz.* *p*

122 arco

125

en di - mi - nuant

128 26 pizz. 8 27 2

pp

140 pizz. 4 28 arco

p f

148

ff

152 en retenant - - - - - au Mouvt. 6 3

sfz mf > dimin. p <

162

p pp p pizz.

### III.

Mouv. de Ronde française

arco pizz.

*f*

4 arco *f* 2

8 **29** *f* *mf marqué*

11 **30** 3 *f* *sfz* >

16 **31** *p* *f* *sfz* > *sfz* >

21 *sfz* > *sfz* > < *ff*

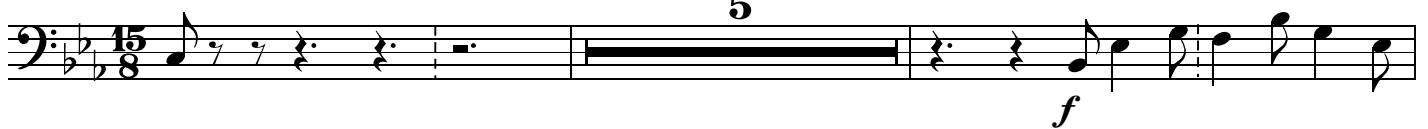
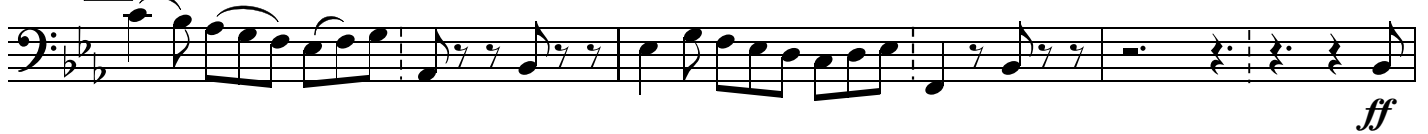
24 *ff* *sfz*

27 **32** *ff* *f* *f*

30 Calme *mf* *pp* 6

38 33

42

45 3452 35

55

58 36

62





67

*mf* *en augmentant*

70

**38** *ff*

74

plus animé en pressant beaucoup plus lent Au mouvement 2

**39** *f* *sfz*

80

*f*

83

*sfz*

85

*mf* *ff*

87

*ff* *fff*