

Ottorino Respighi

FESTE ROMANE

Poema sinfonico
per orchestra

VIOLA

RICORDI

O. RESPIGHI
FESTE ROMANE

POEMA SINFONICO

I. CIRCENSES

VIOLA

Moderato *ff* *Molto allegro*
Moderato *ff* *All.^o molto*
Moderato *ff* **1**
1
poco rall. *Molto allegro* **2**
cresc. *ff*
cresc.
121072 - III

Pezante *Andante*

8 3 5 2

ff

1 1 1

ff

4

mp *ff*

mp *ff*

DIVISE 2 3

Piu mosso

f

ff

Ancora piu mosso

5

ff

Stringendo

ff

Precipitando

ff

6

Allegro

fff

ff
Animando
ff

All.^o vivo

ff

ff

ff

ff

7
ff

ff

Largo
ff
dim... p

6
10 *animando sempre*
mf cresc.

1.^a SOLA *All.^o moderato*
f

11 TUTTE
f

12 *Piu Allegro*
ff

All.^o festoso
ff

Three staves of musical notation in treble clef. The first staff contains a sequence of eighth and sixteenth notes with slurs and accents. The second and third staves continue this melodic line with similar rhythmic patterns and articulations.

Musical staff starting with measure 13, marked *ff*. The notation continues with eighth and sixteenth notes, including slurs and accents.

Musical staff with accents and slurs over the notes, continuing the melodic development.

Musical staff with the instruction *dim. poco a poco* written below the notes.

Musical staff with slurs and accents, showing the continuation of the piece.

Musical staff with slurs and accents, continuing the melodic line.

Musical staff with measure 14, a fermata, and a first ending bracket.

Musical staff with markings *div. 2*, *p*, and *dim.* indicating a change in dynamics and texture.

Musical staff with markings *Piu calmo* and *Allegro*, and measure 15. It includes a first ending bracket and a final cadence.

III. L'OTTOBRATA

*Allegro
vivace*

UNITE

17 *All^o vivace*

ppp SUL PONT.

Musical staff with notes and rests.

Musical staff with notes and rests.

18 P.N.

p

P.N.

PIZZ. *cresc. poco a poco*

Musical staff with notes, rests, and performance markings.

mf

1 2 3 4 5 6 7 8

Musical staff with notes, rests, and performance markings.

19

f

ARCO

1 2 3 4 5 6 7 8

f

Musical staff with notes, rests, and performance markings.

segue stacc.

PIZZ.

segue stacc.

PIZZ.

Musical staff with notes, rests, and performance markings.

20 *Lo stesso tempo*

ARCO

f

PIZZ.

PIZZ.

p

1

Musical staff with notes, rests, and performance markings.

ARCO > PIZZ. **f** ARCO PIZZ.

ARCO *p* 1 **f** ARCO PIZZ.

PIZZ. *p* 1

21 ARCO *ff* 3 *ff* *dim:...*

p *tremolando*

segue

22

segue

dim.

pp

segue stacc.

23

lunga

a tempo

pp

continuando senza alterare il ritmo

segue stacc.

segue stacc.

segue

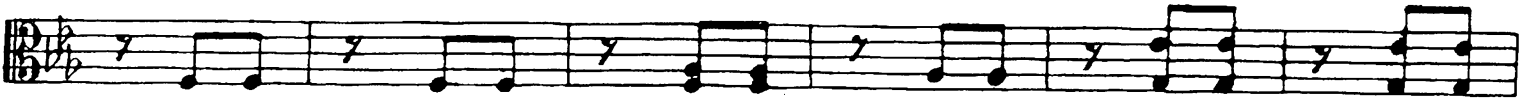
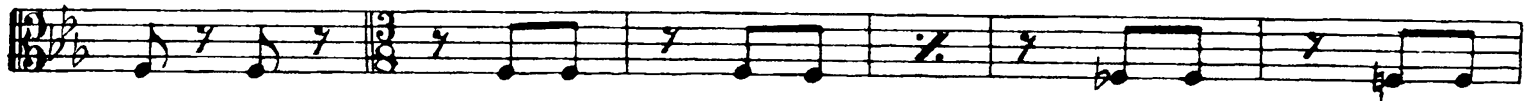
a tempo

PIZZ.

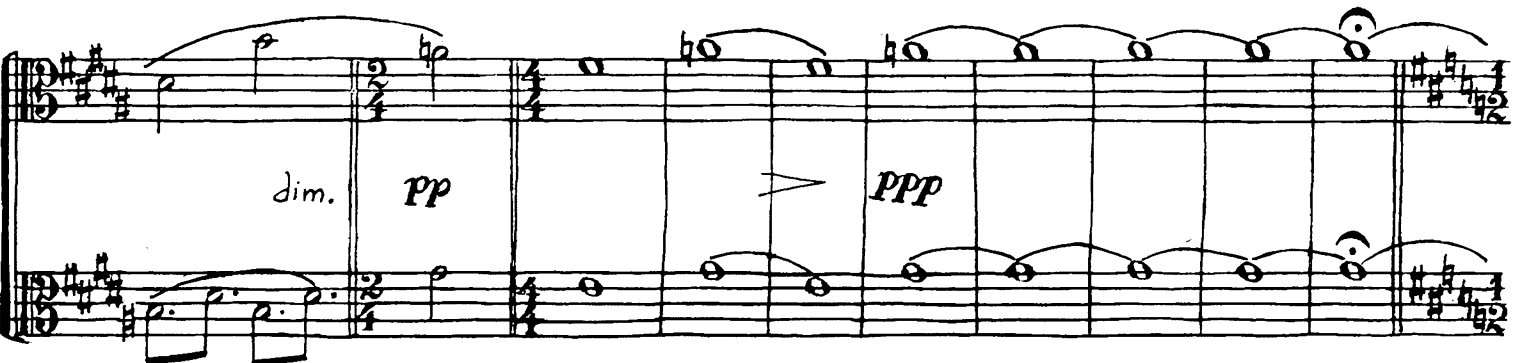
dim. e perdendosi ppp

24 *And.^{te} sostenuto*

Mandolin



25 *And.^{te} lento ed espressivo*



IV. LA BEFANA

27

Vivo

pp

1 2 3 4 *cresc.* 5 6 7 8

UNITE

2 3 4 5 6 7 8 9

p cresc.

f cresc.

28

ff

ff

29

ff

ff

PIZZ.

30

Vivacissimo

4 3/4

(pizz)

DIV. *f*
(Pizz)

PIZZ.

6

f
PIZZ.

ff

31 ARCO

ff
ARCO

1

Musical notation for measures 30 and 31. The score consists of two staves in 6/8 time with a key signature of one sharp (F#). The melody is characterized by eighth notes with slurs and accents.

Musical notation for measures 32 and 33. Measure 32 is marked with a box containing the number 32. The notation continues with eighth notes and slurs.

Musical notation for measures 34 and 35. Measure 34 is marked with a box containing the number 33 and the tempo marking *Vivo*. The notation includes slurs and accents.

Musical notation for measures 36 and 37. The notation features eighth notes with slurs and accents.

Musical notation for measures 38 and 39. The notation includes eighth notes with slurs and accents.

Musical notation for measures 40 and 41. The notation includes eighth notes with slurs and accents. The dynamic marking *sim* is present below the staff.

Musical notation for measures 42 and 43. The notation includes eighth notes with slurs and accents.

Musical notation for measures 44 and 45. Measure 44 is marked with a box containing the number 34 and the tempo marking *Tempo di Saltarello*. The notation includes eighth notes with slurs and accents. Measure 45 features a first ending bracket with the number 1.

UNITE

35

36

Tempo pesante di Valse

37

Tempo più mod^{le} di Sà Nà restò
(à l'allone)

38

Molto vivo

39 *Meno (in uno)*

sf *sf*

40 *tratt. a tempo*

fff *sf*

41 *Vivacissimo*

sf

tratt. a tempo

ff *sf*

sf

42 *Molto vivo*

f

cresc.

43

fff

44

1 2 3 4 5 6 7
cresc.

45

Sostenuto
46 *ff*

Stringendo molto
47 *Presto*

ff

48 *Prestissimo*