

Stabat Mater

pamięci Izabelli Krystallowej

Karol Szymanowski

op. 53

1. Soprano solo, Coro (SA)

Andante, mesto **2** poco rit. **4** Vln II con sord. **1**

10 pizz. *pp* *con sord.* **2** *rallentando* arco *div. mp* **più lento (colla parte)** *ppp sempre* **4** *rall.*

17 *ppp* *dolce sfz ma pp* *ppp* *pp*

24 **3** Tempo I a tempo **2** poco rit. **1** a tempo **4** **1**

33 pizz. *pp* *rall.* arco **4** poco meno *mf* *ppp ppp* *p*

38 *div.*

44 **5** unis. *pp* *ppp* **6** Tempo I **3** pizz. *ppp*

54 poco rit. **5** **7** **1** pizz. *pp* *rallentando* arco *mp*

62 allarg. molto più lento allarg. e dim. pizz. *ppp* *pp*

2. Baritono solo, Coro (SATB)

Moderato
sul E senza sord.

pp arco
senza sord.

pp pizz.

Detailed description: This block contains the first three measures of the piece. It features two staves. The upper staff is in bass clef with a 4/4 time signature, containing a melodic line of eighth notes with slurs and accents. The lower staff is also in bass clef with a 4/4 time signature, containing a rhythmic accompaniment of eighth notes. Dynamic markings include *pp arco* and *senza sord.* above the upper staff, and *pp pizz.* below the lower staff.

4 *crescendo*

Detailed description: This block contains measures 4 and 5. The upper staff continues the melodic line, and the lower staff continues the rhythmic accompaniment. The time signature changes from 4/4 to 3/2 at the start of measure 5.

Detailed description: This block contains measures 6 and 7. The upper staff continues the melodic line, and the lower staff continues the rhythmic accompaniment. The time signature changes from 3/2 to 4/4 at the start of measure 7.

8 cre- -scen- -do

Detailed description: This block contains measures 8, 9, and 10. The upper staff continues the melodic line with lyrics "cre-", "-scen-", and "-do" placed above the notes. The lower staff continues the rhythmic accompaniment. The time signature changes from 4/4 to 3/2 at the start of measure 10.

11 8 cre- -scen- -do

Detailed description: This block contains measures 11, 12, and 13. The upper staff continues the melodic line with lyrics "cre-", "-scen-", and "-do" placed above the notes. The lower staff continues the rhythmic accompaniment. The time signature changes from 3/2 to 4/4 at the start of measure 12.

14 dim. . .

Detailed description: This block contains measures 14, 15, and 16. The upper staff continues the melodic line. The lower staff continues the rhythmic accompaniment. The time signature changes from 4/4 to 3/2 at the start of measure 16. A *dim. . .* marking is placed above the upper staff.

17 mol- -to

ppp

Detailed description: This block contains measures 17, 18, and 19. The upper staff continues the melodic line with lyrics "mol-" and "-to" placed above the notes. The lower staff continues the rhythmic accompaniment. The time signature changes from 3/2 to 4/4 at the start of measure 18. A *ppp* marking is placed below the lower staff at the end of the piece.

19 **9** (senza sord.) arco al- -lar- -gan- -do
tutti div. *p* *pp* *ppp*

24 a tempo **10** cresc. e accelerando unis.
pp

27 div.

30 **11** Poco più mosso *ff* rall.

36 **12** Tempo I allargando (arco) sul E port. *pp pizz.*

40

42 **13**

46 allargando arco unis.

3. Soprano, Alto solo. Coro (SA)

Lento dolcissimo

poco rit. a tempo

2 2 3 2

11 poco rit. 14 [a tempo]

1 con sord.

ppp < *p* > < *pp* <

rall.

15 a tempo

div.

pp *pp dolce* pizz. (arco) *pp*

16 a tempo

ppp

28 *avvivando crescendo*

allarg.

poco meno

arco *p*

diminuendo

17

pp *ppp*

39 2 2 1 rall.

ppp

47 tacet al fine

4. Soprano, Alto solo, Coro (SATB): TACET

5. Baritono solo, Coro (SATB)

Allegro moderato
senza sord.

div.

ff energico

6 unis.

12 25

pp *molto* *div.* *pp* *pp* *sul pont. trem.*

18 *rall.*

26

ppp *poco meno* *ord. div.* *ff*

26 *dim.* *poco rall. e dim.*

sffz

Tempo come sopra

rall.

34 27

pp *pp* *sul pont.* *ord. div.*

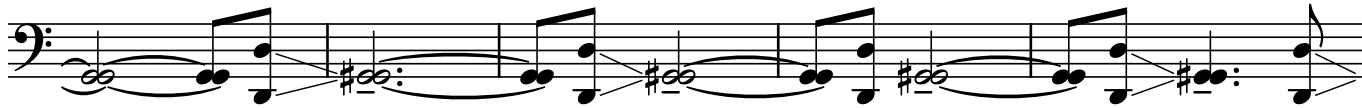
39 **28** poco meno



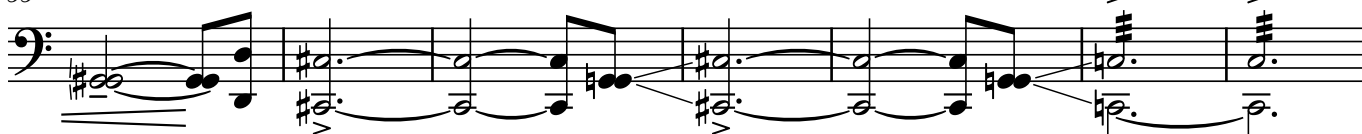
45 **29**



50 **30** poco a poco cresc.



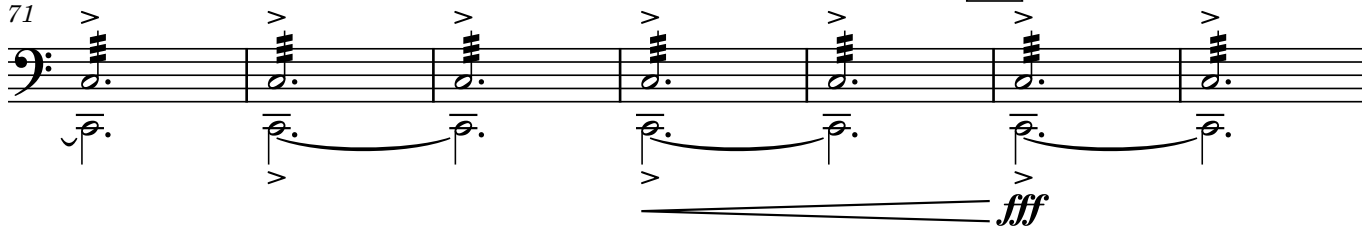
55 **31** crescendo



62 **32** *ff* sempre



71 **33**



84 non rall. **34**



6. Soprano, Alto, Baritono solo, Coro (SATB)

Andante tranquillissimo poco sostenuto a tempo

pizz. con sord. 1 solo *pp* *dolciss.*

8 pizz. poco sostenuto **35** a tempo poco rall. **36** a tempo arco

pp *dolciss.* tutti div. *pp*

18 poco sosten. a tempo poco sosten. unis. **37** a tempo

pp

25 **38**

34 div. **39**

41 unis. *pp*

48 poco rall. **40** rall. *pp* div.

54 **41** meno mosso allarg. e dim. perdendosi

pp > *ppp* *pp* ——— *pppp*