

Sir Henry Wood

Three Pieces from
Fantasia on British
Sea Songs

arranged for two solo cellos
and
6-part cello orchestra

Cello 3

Cello 3

Sir Henry Wood (1869-1944)

I - The Saucy Arethusa

arr. Gwyn Seymour

(d.g.seymour@abdn.ac.uk)

Allegro con spirito *div.*

Vcl

ff *p (sotto voce)*

6

pizz. *fff*

14

A Solo

ff

19

arco *div.* unis rall. a tempo

pp sotto voce *pp*

26

Vcl *div.*

ff

31

B *div.* unis *pizz.*

mf *f*

36

arco *mf* *ff* 6

mf *ff*

41

C *pizz.* arco *p sotto voce*

f *p sotto voce*

47

con sord rall.

p

Cello 3

3 53

p

58 *p espress.*

sf *pp* *div.*

62 **Molto Moderato**
unis **II Tom Bowling**

p

67

p **D**

73

f *p* *pp* *rall...*

79

p *pp* **E** *div.* **First desk only** *rall* **Solo Cello A**

84 **Allegro moderato** **III Hornpipe: Jack's the Lad**
Senza sord.

p

90 **(Tutti)**

pp **(Tutti)**

95

p

100 **F** **pizz.**

pp **F** **pizz.**

Cello 3

108

4



G

116 (pizz.)



124



H



140



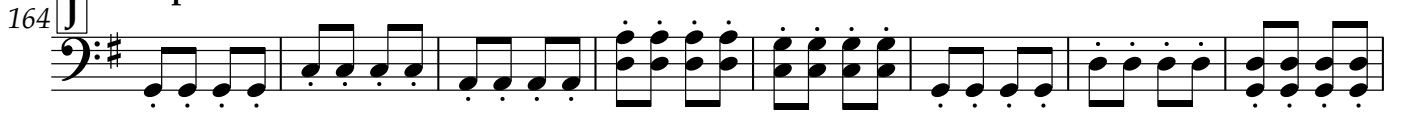
I Sempre accel
arco



156



J Sempre cresc. e accel



172



K CODA

