

DOUBLE BASS

Witches' chorus

(from *Macbeth*)

GIUSEPPE VERDI

Allegro assai mosso (♩ = 88)

Vln. I

8

A

15

B

25

C

34

38

D

51

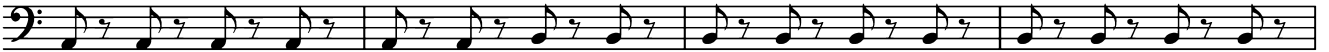
55

Db.

59



63



67

E



71



75



80

arco

pizz.

F



85

arco



90

2

Chorus

10



G Allegro brillante (♩ = 144)

106 W.winds. *stacc.*

p

112 *tr* 1 2 3

p

117 4 5 6 7 8

122 *ff*

ff

128 **H** *ff* *p*

ff *p*

134

139 1 2 3 4 *pp*

pp

144 5 6 7 8 **I** *ff*

ff

Db.

149

pp ff

Detailed description: This musical staff is in bass clef with a key signature of two sharps (F# and C#). It contains five measures. The first measure has a quarter note F# and a quarter note G# with accents. The second measure has a quarter note F# and a quarter note G# with accents, followed by a quarter rest. The third measure has a quarter note F# and a quarter note G# with accents, followed by a quarter rest. The fourth measure has a quarter note F# and a quarter note G# with accents, followed by a quarter rest. The fifth measure has a quarter note F# and a quarter note G# with accents, followed by a quarter rest. Dynamics are *pp* at the start and *ff* at the end.

154

string. a poco a poco

pp ff

Detailed description: This musical staff is in bass clef with a key signature of two sharps (F# and C#). It contains five measures. The first measure has a quarter note F# and a quarter note G# with accents, followed by a quarter rest. The second measure has a quarter note F# and a quarter note G# with accents, followed by a quarter rest. The third measure has a quarter note F# and a quarter note G# with accents, followed by a quarter rest. The fourth measure has a quarter note F# and a quarter note G# with accents, followed by a quarter rest. The fifth measure has a quarter note F# and a quarter note G# with accents, followed by a quarter rest. Dynamics are *pp* at the start and *ff* at the end. The instruction "string. a poco a poco" is written above the staff.

160

Detailed description: This musical staff is in bass clef with a key signature of two sharps (F# and C#). It contains five measures. The first measure has a quarter note F# and a quarter note G# with accents, followed by a quarter rest. The second measure has a quarter note F# and a quarter note G# with accents, followed by a quarter rest. The third measure has a quarter note F# and a quarter note G# with accents, followed by a quarter rest. The fourth measure has a quarter note F# and a quarter note G# with accents, followed by a quarter rest. The fifth measure has a quarter note F# and a quarter note G# with accents, followed by a quarter rest.

166

J

Detailed description: This musical staff is in bass clef with a key signature of two sharps (F# and C#). It contains five measures. The first measure has a quarter note F# and a quarter note G# with accents, followed by a quarter rest. The second measure has a quarter note F# and a quarter note G# with accents, followed by a quarter rest. The third measure has a quarter note F# and a quarter note G# with accents, followed by a quarter rest. The fourth measure has a quarter note F# and a quarter note G# with accents, followed by a quarter rest. The fifth measure has a quarter note F# and a quarter note G# with accents, followed by a quarter rest. A box containing the letter "J" is positioned above the staff.

171

Detailed description: This musical staff is in bass clef with a key signature of two sharps (F# and C#). It contains five measures. The first measure has a quarter note F# and a quarter note G# with accents, followed by a quarter rest. The second measure has a quarter note F# and a quarter note G# with accents, followed by a quarter rest. The third measure has a quarter note F# and a quarter note G# with accents, followed by a quarter rest. The fourth measure has a quarter note F# and a quarter note G# with accents, followed by a quarter rest. The fifth measure has a quarter note F# and a quarter note G# with accents, followed by a quarter rest.

176

ff

Detailed description: This musical staff is in bass clef with a key signature of two sharps (F# and C#). It contains five measures. The first measure has a quarter note F# and a quarter note G# with accents, followed by a quarter rest. The second measure has a quarter note F# and a quarter note G# with accents, followed by a quarter rest. The third measure has a quarter note F# and a quarter note G# with accents, followed by a quarter rest. The fourth measure has a quarter note F# and a quarter note G# with accents, followed by a quarter rest. The fifth measure has a quarter note F# and a quarter note G# with accents, followed by a quarter rest. Dynamics are *ff* at the start.