

**Béla Bartók**



**Piano Concerto no. 3**

**Sz. 119**

**Contrabasso**

## I. Allegretto

[♩ = 88]

3 pizz. *p* arco *p*

12 5 *f*

25 *ff* *ff* *f*

33 2 *mf* *p* 2

44 pizz. *p* arco 3

56 *p* *mp* *mf* *p* 5

69 8 arco *mf* *mp*

87 3 *f* 11 arco *mp*

108  **ff** 6

119  **arco** **mf** 3

125  **pizz.** **p** **f** 6

137  **arco** **f** **f** **ff** **pizz.** **f** 3

147  **arco** **mf** **pp** 5

160  **cresc.** **mf** 6

173  **f** **p** **pizz.** **p** 4 7

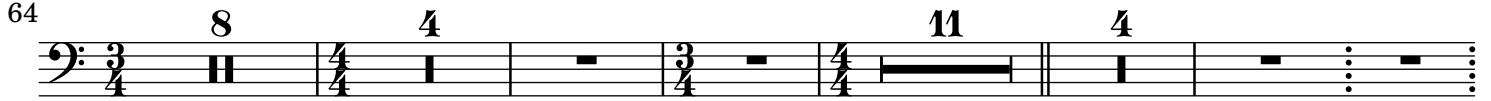
## II. Adagio religioso

♩ = 69

poco più mosso



Tempo I



Vln. I &amp; II, Vla., Vc.



Violino I

Violoncello

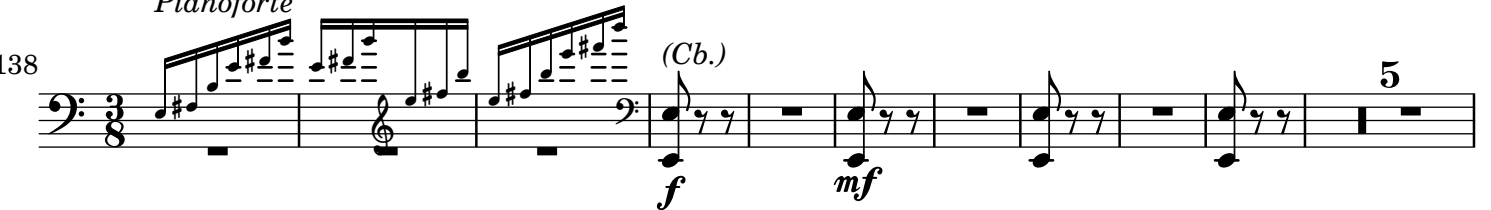
attacca



## III. Allegro vivace

♩ = 92

Pianoforte



188

*ff*

3

202

non div.

*ff*

*ff*

39

253

Violino I

*p*

*p*

265

[a tempo]  
[ritard.]

9

3 (Cb.)

*p*

287

30

*mf*

327

4

*cresc.*

*f*

340

19

*pizz.*

*p*

*arco*

*f*

370

4

(non div.)

45 (♩ = ♩)

25

*ff*

*ff*

452 *Violoncello*

*pp* **5** *f*

467 **4** *pizz. (Cb.)* **17** *arco*

*p* *pp* *pp* *p* *pp*

499 **12** *(non div.)*

*mf cresc.*

524

*f* *ff*

536 *pizz.*

*p* *pizz.*

547 *arco*

*f* *p* *f* *p*

560 **23**

*f* *ff*

596 **18**

*p*

626 *Viola* *pp* *(Cb.)* *mf*

638 **2** **Presto** ♩. = 69 *f cresc.* *pp*

647

653

659 *mf* *p*

670 **27** *Violoncello* *p*

708 *(Cb.)* *p* *cresc.* *f*

**Tempo I.**

721 **3** **2** *ff* *ff* <

738 **3** **2** *f*

755 *f* *mf* *f* *mf* *ff*