

# Homenaje a Federico García Lorca

Silvestre Revueltas  
R.43

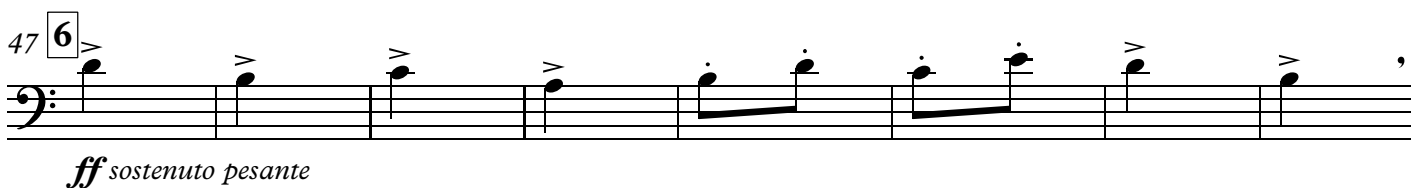
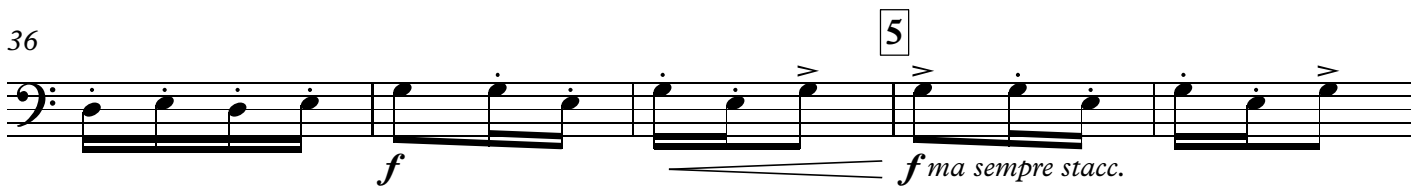
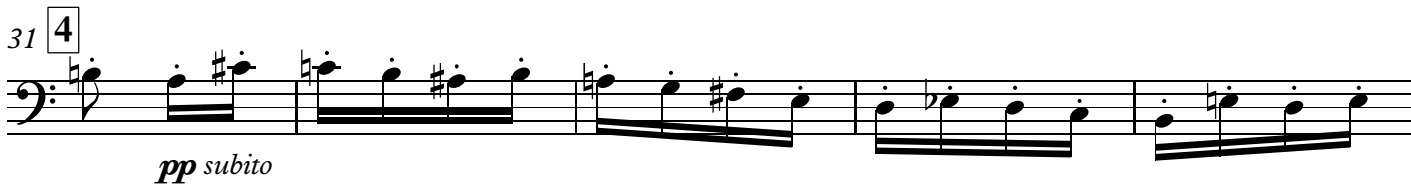
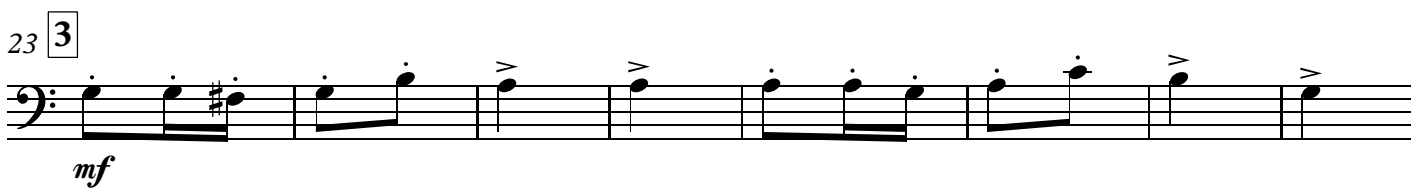
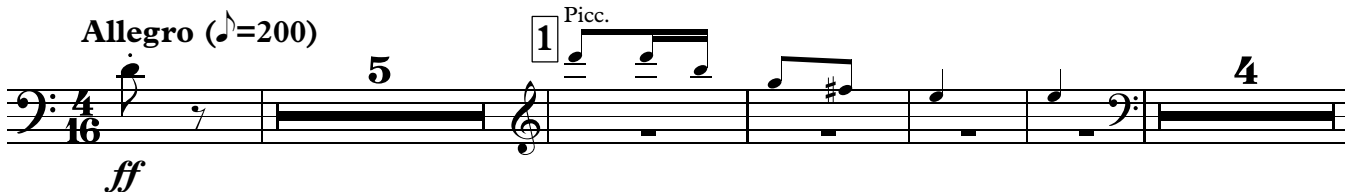
## Baile (Dance)

Lento (*quasi recitativo*)

TACET



Allegro (♩=200)



9  
71 *f*

10  
79 *mf molto espressivo*

11  
86

12  
93 8 13 5

14  
107 5 8 15 *f*

16  
121 8

17  
135 *f* 3 3 3 4 19 3

20  
145 *più f* gliss. gliss. gliss.

21  
151 22 8 *mf staccatiss.* *fff*

23  
163

*f*  
24  
171

25  
179

26  
187

27  
195

28  
201

29  
215

30  
223

31  
231

238 *Lento (quasi Recitativo)*

# Duelo (Sorrow)

♩=96

2 1 13 2 4

20 3 **Meno mosso** Picc. Trmb. 4

*f* < *ff* *f* molto espress. e sostenuto

27 5

*f* *p* *mf*

32 6 **Molto meno mosso**

*ff* marcatis.

36 *molto dim. e rit.* Lento 7 **Tempo I.** ♩=92-96 9

49 8 sempre poco a poco dim. e rit. 9 10 *molto ritardando* 3

2 5 3 3



61 12

*ff*

66 13 5

*ff*

76 14 15 5

*f* *ff* *ff*

86 16

*mf* *mf* *ff* *ff*

92 17 4

*f* *sf*

98 18 4

*f* *sf*

104 19

*f* *sf* *f* *sf* *mf* 3

20

109

*f subito*

117 21 22

*ff*

124 13

con sord.

*ff*

129 23

*pp*

135 24

*pp*

141 25

*sf f f sf*

147 26 27 6

*mf ff*

157 28 5 29

*f espress.*

166 30 3

*f*

31 173 4 8

*ppp*

181 32 4 8

*ff*

189 33

*f staccatiss. ff*