

Clarinetto 2.<sup>do</sup>

Preludio, Corale e Fuga

Op. 10 n. 10 Respighi

# Preudio

in  $\text{F} \flat$ .

Presto

Lento

Handwritten musical notation for the beginning of the piece, including a treble clef, a key signature of three sharps (F#, C#, G#), a 4/4 time signature, a large number '5' with a circled '0' above it, and a 2/4 time signature with the number '20' written below it.

Handwritten musical notation for the main body of the piece, consisting of several staves. It includes dynamic markings such as *p* and *cres.*, and contains first and second endings marked with '(1)' and '(2)'. The notation includes various rhythmic patterns, slurs, and articulation marks.

*mf.* *f.*

*cresc.*

*f.* *dim.*

(3)

*legg.*

*f.*

*dim.*

(4)

*pp.* *stacc.*

*Segue*

4

*cresc- poco a poco*

*mf.*

Corale *Lento*

(5)

Handwritten musical notation on a single staff. It begins with a dynamic marking of *pp.* and features a long, sweeping melodic line with various note values and rests.

Handwritten musical notation on a single staff, continuing the melodic line from the previous staff. It includes a dynamic marking of *pp* towards the end of the staff.

Handwritten musical notation on a single staff, starting with a circled measure number **(6)** and a dynamic marking of *p. legato*. The notation shows a melodic line with some rests.

Handwritten musical notation on a single staff, featuring a melodic line with several rests and a dynamic marking of *p.*

Handwritten musical notation on a single staff, starting with a dynamic marking of *cresc.* and showing a melodic line with many notes and rests.

Handwritten musical notation on a single staff, featuring dynamic markings of *cresc.*, *f*, and *dim.* over a melodic line with many notes.

Handwritten musical notation on a single staff, starting with a circled measure number **(7)** and a dynamic marking of *pp.*. It includes a double bar line and a repeat sign.

Handwritten musical notation on a single staff, featuring a melodic line with a dynamic marking of *p.* and a *cresc.* marking.

Handwritten musical notation on a single staff, featuring a melodic line with a *rit.* marking and a dynamic marking of *p.*

Handwritten musical notation on a single staff, ending with a circled word *Segue -* and a double bar line.

6

Lento a piacere

Fuga

(10)

1.5

(11)

Meno mosso

(12)

cresc.

animato

rit.

(13)

v. s.

8

1

2

3

4

Handwritten musical notation for measures 8-11. Measure 8 starts with a dynamic marking 'mf'. Measures 9-11 contain complex chordal textures with various accidentals and stems.

(14)

Handwritten musical notation for measure 14, featuring a melodic line with a slur and a complex chordal accompaniment.

Handwritten musical notation for measure 15, continuing the melodic and chordal patterns from the previous measure.

Handwritten musical notation for measure 16, showing a melodic line with a slur and a complex chordal accompaniment.

Handwritten musical notation for measure 17, featuring a melodic line with a slur and a complex chordal accompaniment. The measure ends with a dynamic marking 'cresc.'.

Handwritten musical notation for measure 18, featuring a melodic line with a slur and a complex chordal accompaniment. The measure ends with a dynamic marking 'cresc.'.

Handwritten musical notation for measure 19, featuring a melodic line with a slur and a complex chordal accompaniment. The measure ends with a dynamic marking 'dim.'.

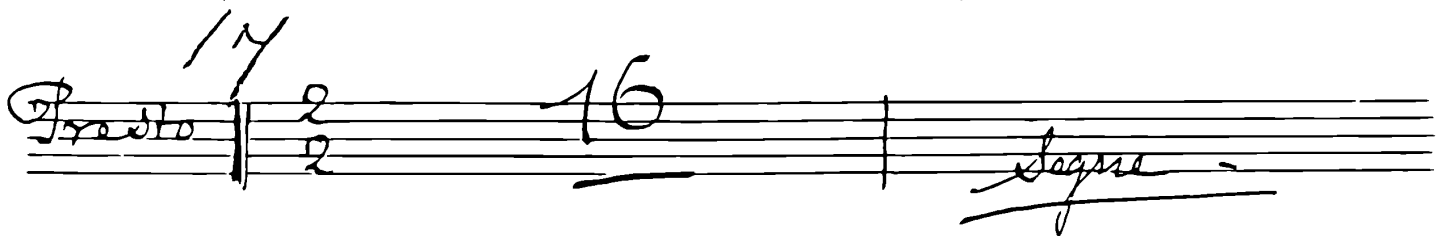
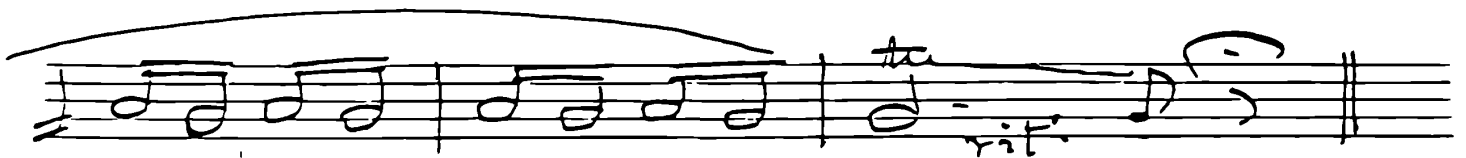
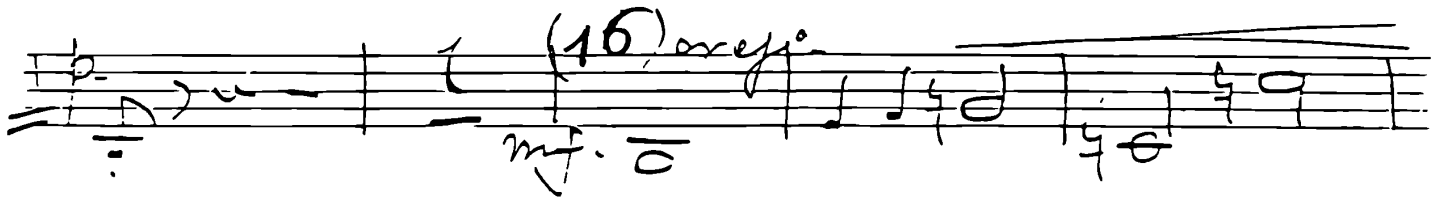
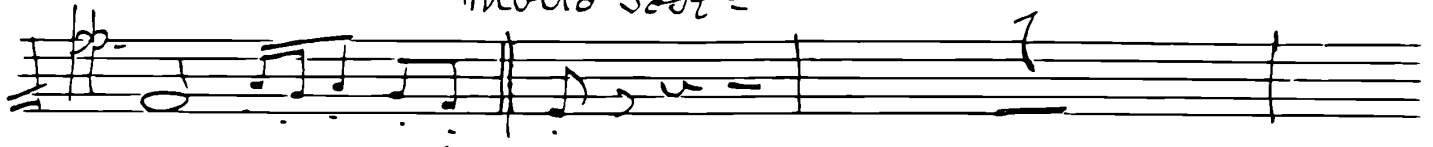
(15)

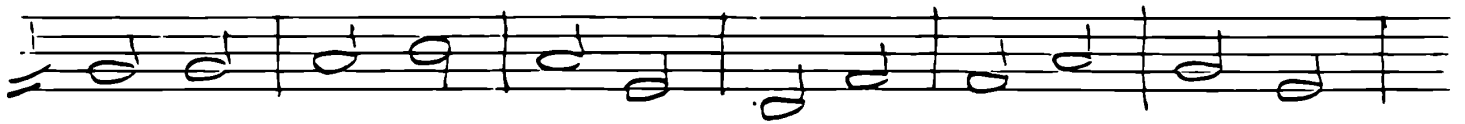
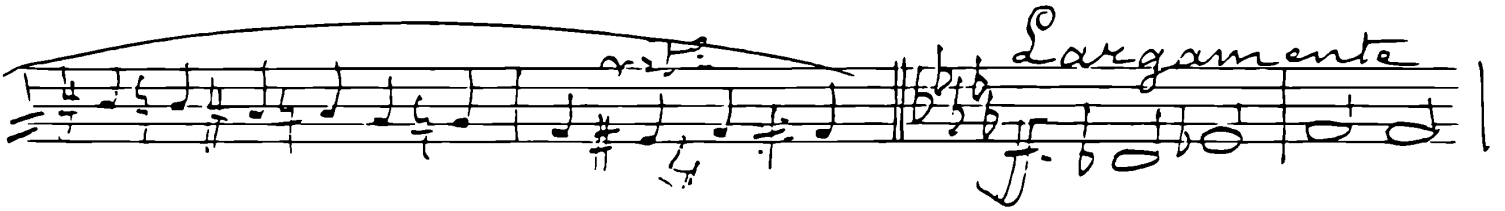
Handwritten musical notation for measure 20, featuring a melodic line with a slur and a complex chordal accompaniment. The measure ends with a dynamic marking '1.º Tempo'.

Handwritten musical notation for measure 21, featuring a large '6' time signature and a complex chordal accompaniment.



Molto sost<sup>o</sup>





(20)

Handwritten musical score for system (20) on a grand staff. The first staff contains a melodic line with a fermata over the first measure, a 2-measure rest, and a fermata over the final measure. The second staff continues the melody with a fermata over the final measure, marked *dimin.*. The third staff is marked *p* and *sento affai*, featuring a piano accompaniment with a *pp.* dynamic. The fourth staff continues the piano accompaniment with a *mf.* dynamic and a *dim.* marking. The fifth staff shows the piano accompaniment with a *pp.* dynamic. The sixth staff continues the piano accompaniment with a fermata over the final measure.

(21)

Handwritten musical score for system (21) on a grand staff. The first staff contains a melodic line with a fermata over the final measure, marked *f.*. The second staff continues the melody with a fermata over the final measure, marked *mf.*. Below the second staff are three empty staves.