

# Antonio Salieri (1750 - 1825)

## SINFONIA in RE

"Giorno onomastico,"  
per orchestra da camera

Revisione di RENZO SABATINI

FLAUTO I.

Allegro, quasi Presto

The musical score for Flute I consists of nine staves of music. The first staff begins with a dynamic marking of *f* and includes a fermata over the first two measures. Subsequent staves are marked with measure numbers 5, 10, 15, 20, 25, 30, 35, and 40. The score features various dynamics including *f*, *p*, and *sf*. It includes trills, slurs, and triplet markings. The key signature is D major, and the time signature is 2/4.

2 45 50 55 60

Crni 65

70 ff

75 p

80 f

85 p 90

95

100 105 110 p

115 p

120 125

130

135 140

145

150

155 160

165

170

175

180

185 190

195

Larghetto

200

205

210

Musical staff with treble clef and key signature of two sharps (F# and C#). It contains four measures with fingerings: 3, 5, 5, and 2.

215

Musical staff with treble clef and key signature of two sharps. It contains four measures with dynamics *mf dolce ma cantato* and *sf*.

Musical staff with treble clef and key signature of two sharps. It contains four measures with dynamics *sf* and *p*.

220

225

Musical staff with treble clef and key signature of two sharps. It contains four measures with dynamics *sf*, *p*, and a trill (*tr*).

230

Musical staff with treble clef and key signature of two sharps. It contains four measures with dynamics *p* and *fp*.

235

Musical staff with treble clef and key signature of two sharps. It contains four measures with dynamics *mf* and *f p*.

240

Musical staff with treble clef and key signature of two sharps. It contains four measures with dynamics *f* and *p*.

245

250

255

260

265

Musical staff with treble clef and key signature of two sharps. It contains five measures with fingerings: 4, 5, 5, 5, and 2.

270

Musical staff with treble clef and key signature of two sharps. It contains four measures with dynamics *mf espress.*

*mf*

275

*f* *p*

280

*f*

285

*fp* *fp*

290

*mf*

295

*f* *p* *f* *p*

*f* *p*

300

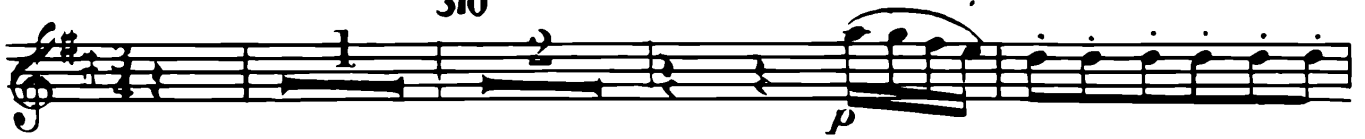
*p*

305

*pp*

MINUETTO  
Non tanto allegro

310



315



320



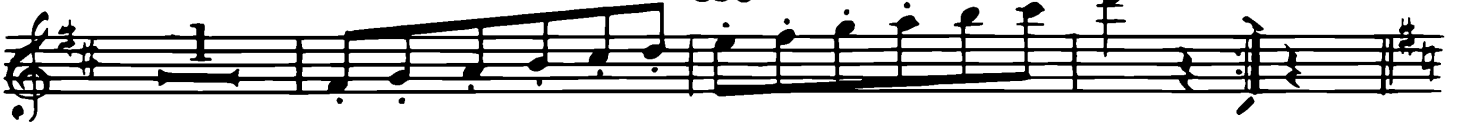
325

330



335

Fine



TRIO

340

345

350

I.

II.



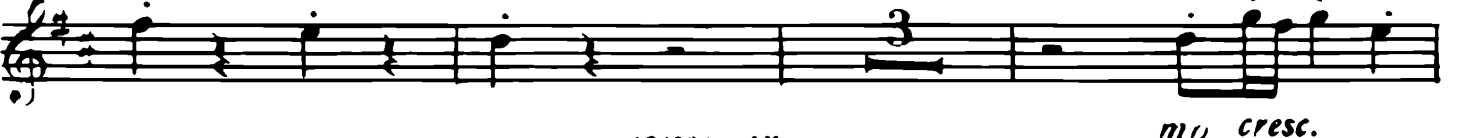
Allegretto e sempre l'istesso tempo

355



360

365



*ff*

370

375

*tr*

380

385

390                      395                      400

405                      410                      415

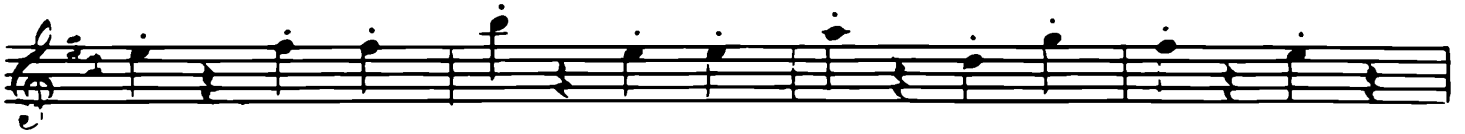
Vno

Fag. I.

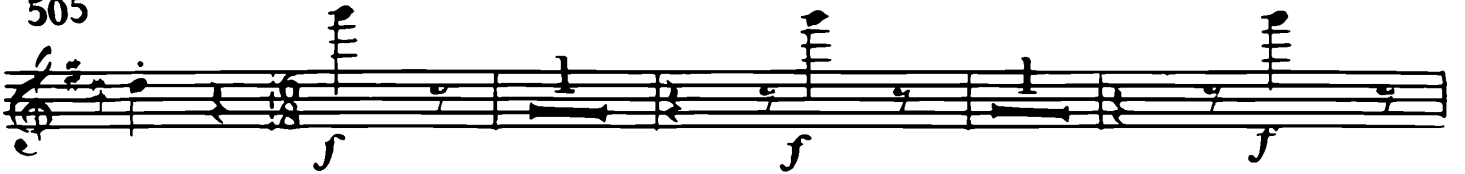
*ecc.*



500



505



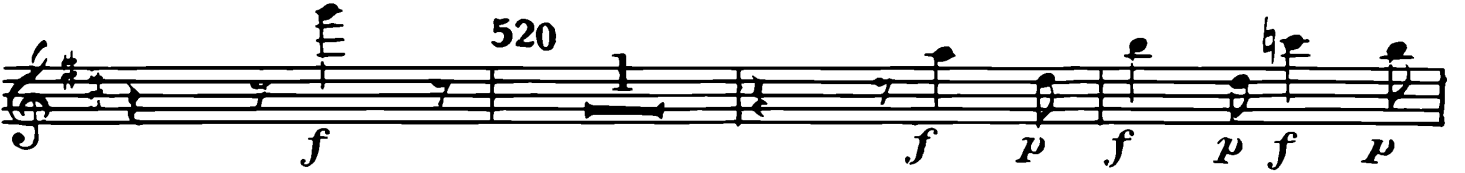
510



515



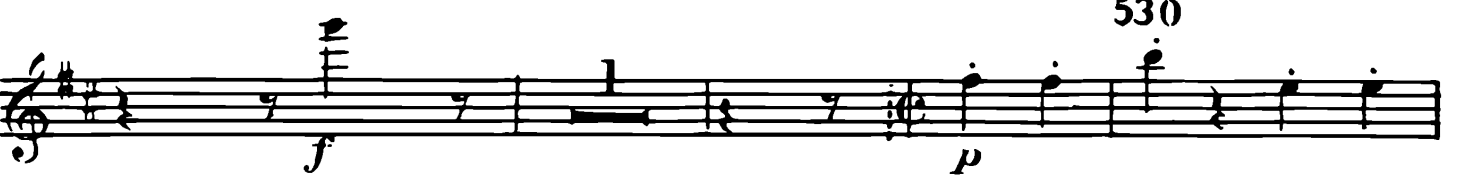
520



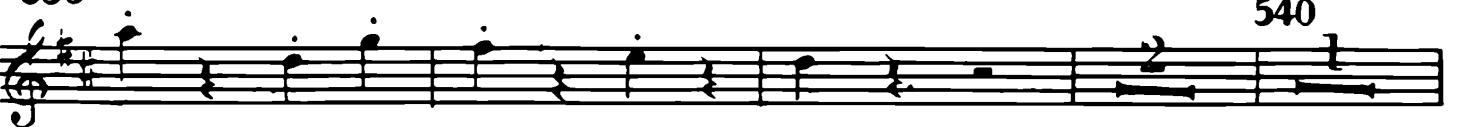
525



530



535



540

*mf cresc.*

*ff*

545

550

*p*

555

560

565 570

*ff*