

-2-
+ timpani

Handwritten musical score for timpani, consisting of ten staves. The score includes various dynamics, articulations, and performance instructions. The first staff is marked **mp** and includes the instruction **Timp.**. The second staff is marked **f**. The third staff is marked **f** and includes the instruction **All^o con brio**. The fourth staff is marked **f**. The fifth staff is marked **f** and includes the measure number **16**. The sixth staff is marked **mf** and includes the measure number **17**. The seventh staff is marked **f** and includes the measure number **18**. The eighth staff is marked **f** and includes the measure number **19** and the instruction **Poco meno mosso**. The ninth staff is marked **f** and includes the measure number **20** and the instruction **All^o mod^{to}**. The tenth staff is marked **f** and includes the measure number **22** and **23**.

.3.
+ timpani

No. 3.

Quarrel.

24 Moderato

25 Allegro irato'

8 12

26 Vni I

T-ba Timp. mp mf

28 29 8

30 31 32 10 8 10

33 34 35 Vni I 12 10

Tr. boni

12

4.
TimpANI

Handwritten musical score for Timpani, measures 36-47. The score is written on ten staves. Measures 36-37 are in bass clef. Measure 38 is in bass clef with a large '8' below it. Measure 39 is in bass clef with a large '12' below it. Measure 40 is in treble clef with a '1. ti' marking. Measures 41-42 are in bass clef. Measure 43 is in bass clef with a large '4' below it. Measures 44-45 are in bass clef with large '8' and '12' below them. Measure 46 is in bass clef with a large '12' below it. Measure 47 is in treble clef. The score includes various musical notations such as notes, rests, and dynamic markings (f, ff, mf). Performance instructions include 'senza rit.' and 'Timp'. Measure numbers 36, 37, 38, 39, 40, 41, 42, 43, 44, 45, 46, and 47 are boxed in the left margin.

-5-
+ timpani

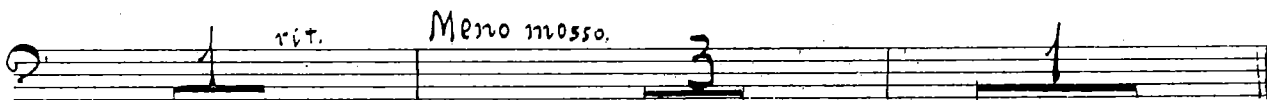
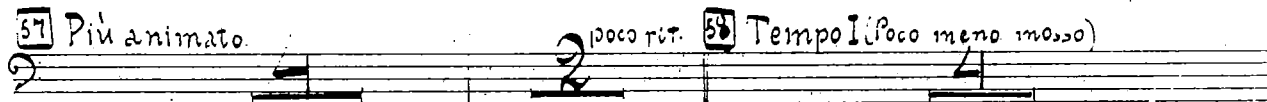
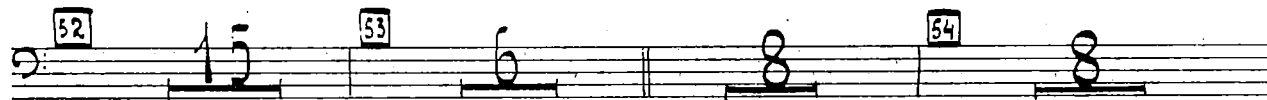
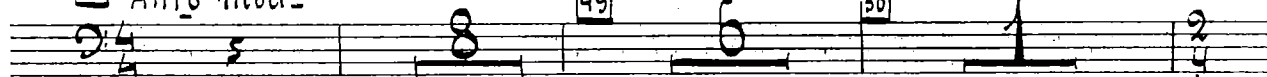


3

No. 4

Grandmother Fairy and Winter Fairy.

48 *Allro molto*



-7.
Timpali

70 Moderato 71 All^o, ma non troppo gr. P.

72 Meno mosso 73 Moderato 74

75 Allegro, ma non troppo.

76 77

6 1 rit. a tempo 5 8

78 Y-ni I

79 Timp.

80 a tempo 81

2 rit. 12 4

82 Y-ni I

83 Timp.

10

84 Y-ni I

10

- 8 -
TIMPAVI

Musical score for Timpani, measures 85-87. Measure 85 starts with a *ff* dynamic. Measure 86 features a triplet. Measure 87 ends with a *ff* dynamic. The notation includes various rhythmic values and accidentals.

N: 6
Cinderella Goes to the Ball.

Musical score for "Cinderella Goes to the Ball", measures 88-99. Measure 88 is marked *Vivo*. Measure 89 is marked *mp*. Measure 90 is marked *f*. Measure 91 is marked *mp*. Measure 92 is marked *f*. Measure 93 is marked *f*. Measure 94 is marked *Poco più lento*. Measure 95 is marked *ancora più lento*. Measure 96 is marked *Allegro grazioso*. Measure 97 is marked *Allegro grazioso*. Measure 98 is marked *Timp.*. Measure 99 is marked *p*. The score includes various rhythmic values and dynamics.

-9.
TIMPANI

Musical score for Timpani, measures 100-107. The score is written on five staves. Measures 100-102 are marked with *p* and *mp*. Measures 103-104 are marked with *p*. Measure 105 is marked with *p*. Measure 106 is marked with *p* and includes the instruction "un poco accelerando al fine.". Measure 107 is marked with *p* and includes the instruction "V.ni I!". The notation includes various rhythmic values and rests.

Nº 7

Cinderella's Waltz

108 Allegro espressivo.

Musical score for Cinderella's Waltz, measures 108-109. The score is written on four staves. Measure 108 is marked with *p* and *mp*. Measure 109 is marked with *p*. The notation includes various rhythmic values and rests.

-10.
Timpali

Handwritten musical score for Timpani, measures 110-124. The score is written on ten staves in bass clef. It includes various musical notations such as notes, rests, and dynamic markings. Measure numbers 110 through 124 are boxed. The piece concludes with the instruction "Poco a poco accelerando al fine." and a final note on measure 124.

110 *mf*

111

112 2 113 8

114 *f*

115 *mf*

116 8 117 7 poco rit. 118 a tempo *p*

119 *cresc.*

120 3 121 8 122 10

123 *mf* *mp* *cresc.* *mf*

124 *Poco a poco accelerando al fine.*

-11.
TIMPANI

Musical score for Timpani, measures 125-127. The score consists of four staves. Measure 125 is marked *p*. Measure 126 is marked *un poco cresc.*. Measure 127 is marked *f* and *attacca.*

Nº 8

Midnight.

Musical score for 'Midnight', measures 128-132. The score consists of five staves. Measure 128 is marked *Allegro moderato.*. Measure 129 is marked *T. b. a. I*. Measure 130 is marked *Timp.* and *f*. Measure 131 is marked *Moderato*. Measure 132 is marked *Moderato*.