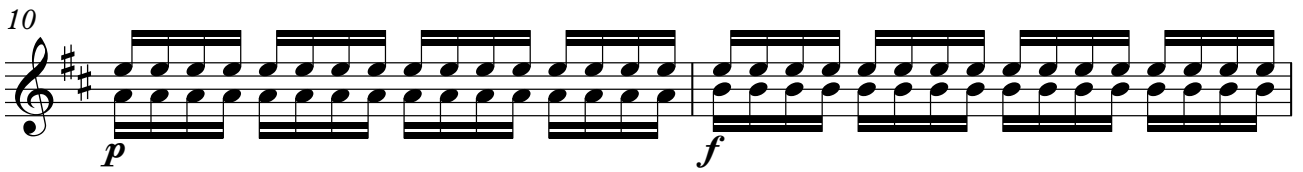
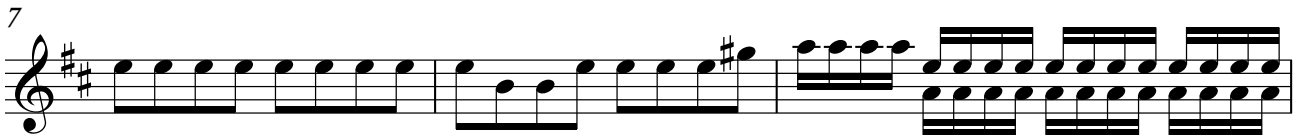


Sinfonia a 6

Violin 2

Johan Daniel Berlin (1714-1787)

Allegro



20

22

p *f* *p* *f*

26

28

31

34

37

p

39

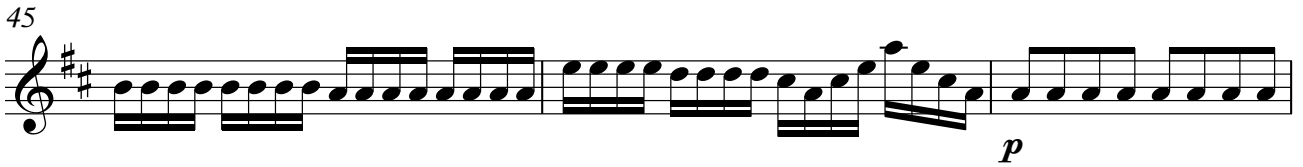
f *p*

41

f

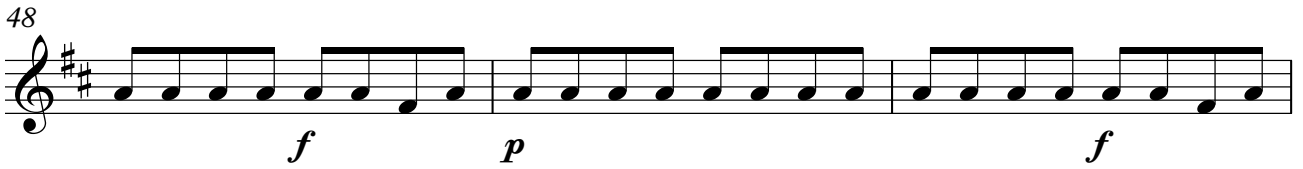
43

45



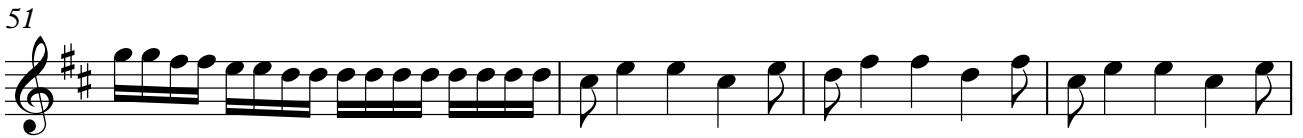
p

48



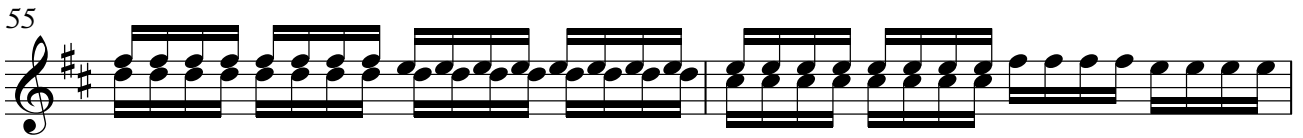
f *p* *f*

51



p

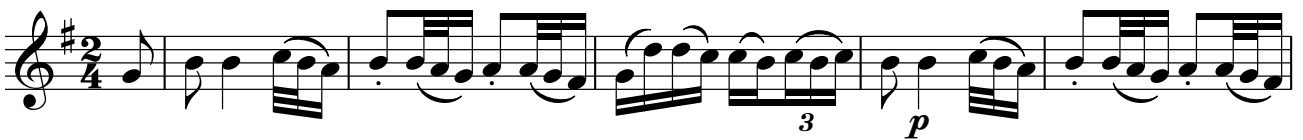
55



57

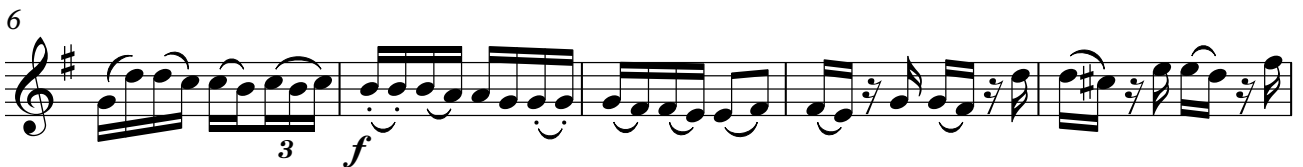


59

**Andante**

p

6



f

11



p

Violin 2

17

f 3 *p* *f*

p *f*

29

p 3 *f* *p*

34

f *p* *f*

40

p *f* 3 3 *tr*

44

p 3 *f* 3 3 *tr* *tr* *p*

Allegro

3 3 *p* 3 3 *f* 3 3

8

3 *p*

15

f *p*

Violin 2

22

f *p* *f*

3 3 3 3 3

This musical staff contains measures 22 through 30. It begins with a dynamic marking of *f* (forte) and features a repeat sign. The first measure of the repeat contains a triplet of eighth notes. The dynamic shifts to *p* (piano) for the second measure of the repeat, which also contains a triplet. The dynamic returns to *f* for the final measure of the repeat, which contains another triplet. The key signature is one sharp (F#).

30

This musical staff contains measures 30 through 38. It features a continuous eighth-note pattern with various dynamics and articulations. The key signature is one sharp (F#).

38

p *f*

This musical staff contains measures 38 through 46. It features a continuous eighth-note pattern with dynamics ranging from *p* (piano) to *f* (forte). The key signature is one sharp (F#).

46

3 3 3 3 3

This musical staff contains measures 46 through 53. It features a continuous eighth-note pattern with several triplet markings. The key signature is one sharp (F#).

53

3 3 3 3

p *f* *p*

This musical staff contains measures 53 through 59. It features a continuous eighth-note pattern with triplet markings and dynamic markings of *p*, *f*, and *p*. The key signature is one sharp (F#).

59

f *p* *f*

This musical staff contains measures 59 through 66. It features a continuous eighth-note pattern with dynamic markings of *f*, *p*, and *f*. The key signature is one sharp (F#).

66

p *f* *p*

This musical staff contains measures 66 through 71. It features a continuous eighth-note pattern with dynamic markings of *p*, *f*, and *p*. The key signature is one sharp (F#).

71

f

This musical staff contains measures 71 through 78. It features a continuous eighth-note pattern that concludes with a final chord. The key signature is one sharp (F#).