

No. 5.

# Pomp and Circumstance

MILITARY MARCHES.

EDWARD ELGAR. Op. 39.

Vivace

VIOLA.

1

2

3

4

5

6

7

8

*ff* *sf* *sf* *sf* *f* *mf* *f* *sf* *sf* *sf* *f* *cresc.* *pizz.* *p* *cresc.* *f* *arco* *sf* *ff* *sf* *p*

*div.* *div.* *div.* *div.* *div.* *div.* *div.* *div.*

VIOLA.

Musical score for Viola, measures 9-22. The score is written in 3/4 time with a key signature of two flats (B-flat and E-flat). The notation includes various dynamics, articulations, and fingerings.

Measures 9-10: *pp*, measure 10 has a first ending bracket.

Measure 11: *p*.

Measure 12: *cresc.*, *ff*.

Measure 13: *p*.

Measure 14: *ff*, *p*.

Measure 15: *p*, first ending bracket.

Measure 16: *ff*, second ending bracket.

Measure 17: *ff*.

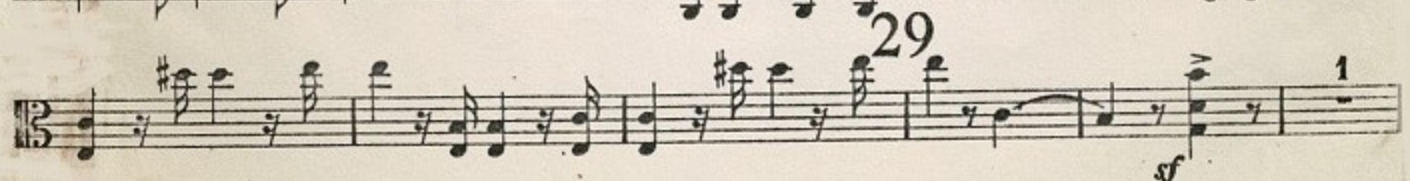
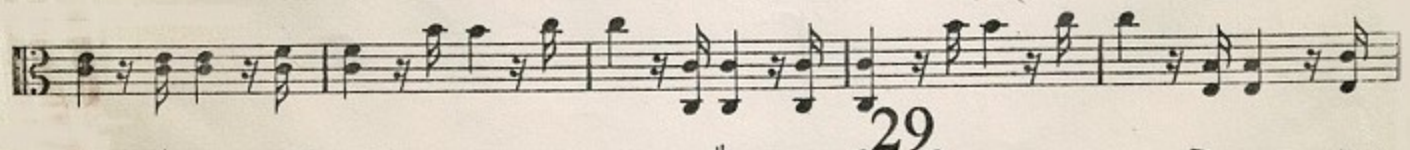
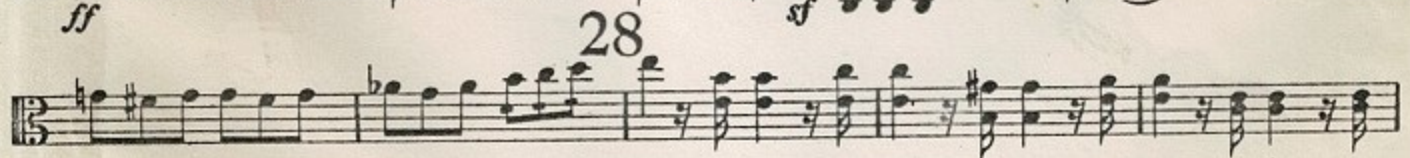
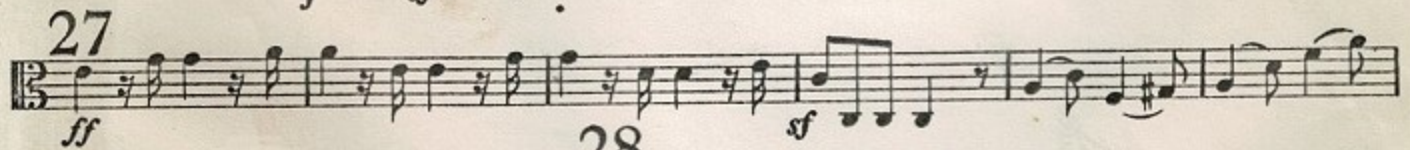
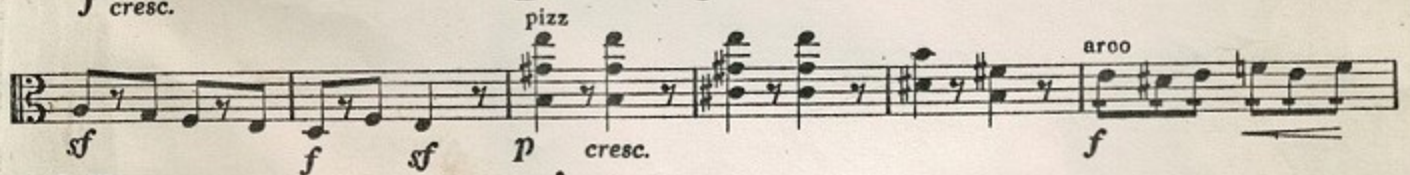
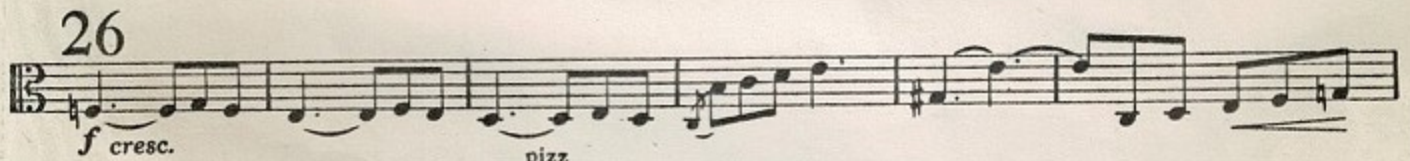
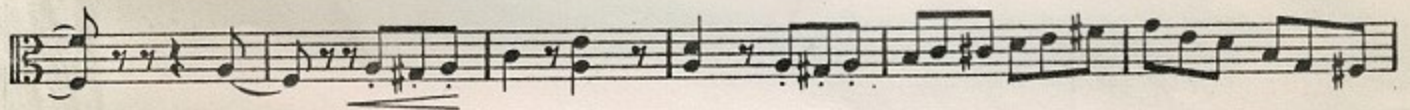
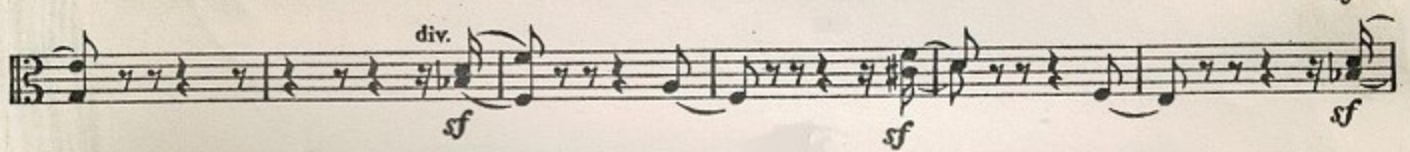
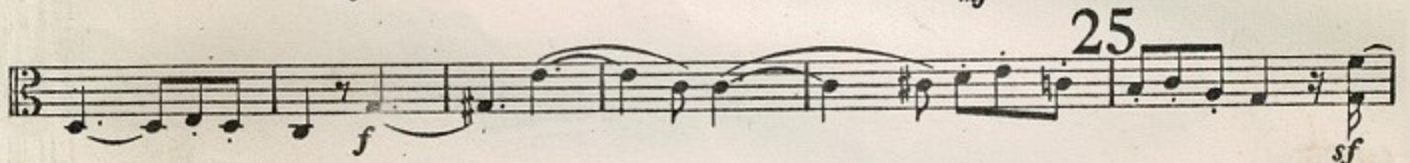
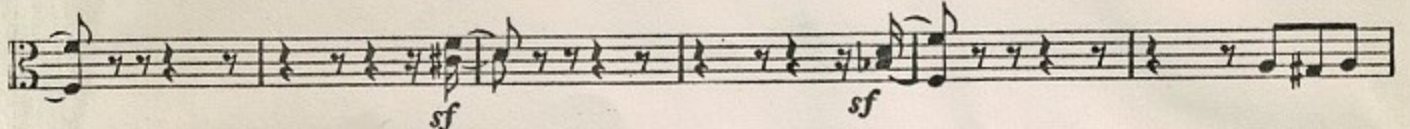
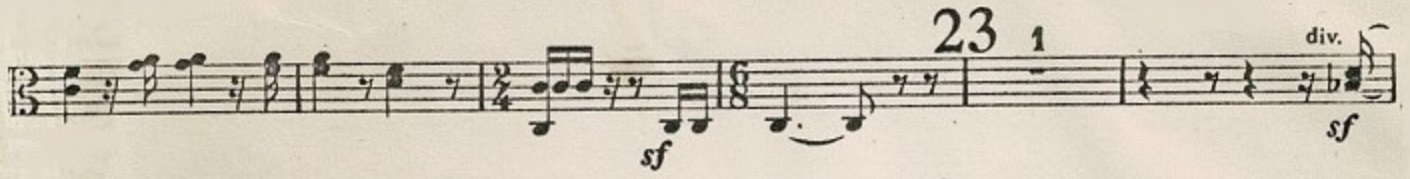
Measure 18: *ff*.

Measure 19: *ff*, first ending bracket.

Measure 20: *ff*, second ending bracket.

Measure 21: *pp*, *f*.

Measure 22: *ff*.



## VIOLA.

30 *Nobilmente*

31

32 *Tutta forza*

33

*Poco allargando* 34 *A tempo*

35

*pizz* 1 *arco*

*pizz* *arco*

*f* *sf* *sf*

Detailed description of the musical score: The score is for a Viola part in 3/8 time. It consists of 12 staves. The first staff (measures 30-31) features a melodic line with slurs and accents, marked *Nobilmente*. The second staff (measures 31-32) contains a rhythmic accompaniment of chords, with some triplets and slurs. The third staff (measures 32-33) continues the accompaniment, marked *Tutta forza*. The fourth staff (measures 33-34) shows a melodic line with slurs and accents, marked *f*. The fifth staff (measures 34-35) features a melodic line with slurs and accents, marked *Poco allargando* and *A tempo*. The sixth staff (measures 35-36) contains a rhythmic accompaniment of chords, marked *sf*. The seventh staff (measures 36-37) features a melodic line with slurs and accents, marked *sf*. The eighth staff (measures 37-38) contains a rhythmic accompaniment of chords, marked *sf*. The ninth staff (measures 38-39) features a melodic line with slurs and accents, marked *sf*. The tenth staff (measures 39-40) contains a rhythmic accompaniment of chords, marked *sf*. The eleventh staff (measures 40-41) features a melodic line with slurs and accents, marked *sf*. The twelfth staff (measures 41-42) contains a rhythmic accompaniment of chords, marked *sf*. The score includes various dynamics such as *sf*, *f*, *sf*, and *f*, and articulations like *pizz* and *arco*. There are also slurs, accents, and slurs over triplets throughout the piece.