

# Suite III

BWV 1009

## 1. Prélude

4

8

12

16

19

22

25

28

32

36

Musical score for bass clef, measures 40-84. The score is written on ten staves. The key signature is one sharp (F#) and the time signature is 4/4. The music features a complex rhythmic pattern with many sixteenth and thirty-second notes, often beamed together. The melody is highly active, with frequent slurs and ties. The bass line is also active, often playing in octaves. The score includes various musical notations such as slurs, ties, and dynamic markings. The piece concludes with a double bar line and repeat dots at the end of the final staff.

40

44

48

52

56

60

63

67

71

75

79

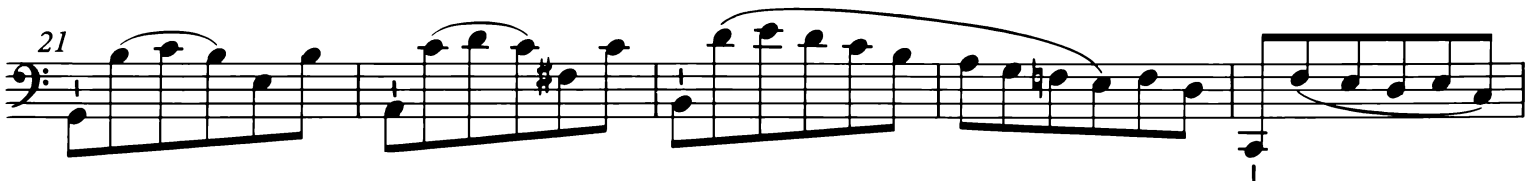
84

## 2. Allemande

The image displays a musical score for a piece titled "2. Allemande". The score is written in bass clef and common time (C). It consists of 19 measures, organized into ten staves. The key signature is one sharp (F#), and the time signature is common time (C). The music features a complex, rhythmic pattern with many sixteenth and thirty-second notes, often grouped in beams. There are several trills (tr) and triplets (3) indicated. The score begins with a treble clef on the first staff, which then changes to a bass clef for the remainder of the piece. The piece concludes with a double bar line and repeat dots at the end of the 19th measure.



### 3. Courante



41

45

50

55

60

65

70

75

80

This section of the musical score consists of eight staves of music in bass clef. The first staff begins with a double bar line and a repeat sign. The music is written in a single melodic line with various rhythmic values, including eighth and sixteenth notes, and rests. There are several slurs and ties throughout the piece. The key signature changes from one sharp (F#) to one flat (Bb) and back to one sharp (F#). The piece concludes with a final cadence in the eighth staff.

4. Sarabande

6

This section of the musical score is for the piece '4. Sarabande'. It consists of two staves of music in bass clef. The first staff is in 3/4 time and features a melodic line with a trill and a fermata. The second staff is in 3/4 time and features a bass line with a trill and a fermata. The key signature is one sharp (F#). The piece concludes with a final cadence in the second staff.

10

13

17

21

This section contains four staves of music. The first staff starts at measure 10 and ends with a trill (tr) above the final note. The second staff starts at measure 13 and ends with a fermata. The third staff starts at measure 17 and ends with a fermata. The fourth staff starts at measure 21 and ends with a fermata. The music is in a bass clef with a key signature of one sharp (F#).

## 5. Bourrée I

5

9

13

17

21

25

This section contains seven staves of music for the piece '5. Bourrée I'. The first staff starts at measure 1 and ends with a trill (tr) above the final note. The second staff starts at measure 5 and ends with a double bar line. The third staff starts at measure 9 and ends with a double bar line. The fourth staff starts at measure 13 and ends with a double bar line. The fifth staff starts at measure 17 and ends with a double bar line. The sixth staff starts at measure 21 and ends with a double bar line. The seventh staff starts at measure 25 and ends with a double bar line. The music is in a bass clef with a key signature of one sharp (F#).

## 6. Bourrée II

Musical score for Bourrée II, bass clef, 3/4 time signature. The score consists of five staves of music. The first staff begins with a treble clef and a key signature of one flat (B-flat). The second staff has a measure marked with a '5' and a flat sign. The third staff has a measure marked with a '10' and a flat sign. The fourth staff has a measure marked with a '15' and a flat sign. The fifth staff has a measure marked with a '20' and a flat sign. The piece concludes with a double bar line and repeat signs. Below the final staff, the text "Bourrée I da capo" is written.

## 7. Gique

Musical score for Gique, bass clef, 3/8 time signature. The score consists of five staves of music. The first staff begins with a treble clef and a key signature of one flat (B-flat). The second staff has a measure marked with an '8' and a sharp sign. The third staff has a measure marked with a '16' and a sharp sign. The fourth staff has a measure marked with a '23' and a sharp sign. The fifth staff has a measure marked with a '29' and a sharp sign. The piece concludes with a double bar line and repeat signs.

