

Sonata c - Moll^{*)}

Andante

Musical score for the first movement of the Sonata in C minor, Bass part, starting with Andante. The score is written in bass clef with a key signature of two flats (C minor) and a common time signature (C). The tempo is marked Andante. The score consists of several staves of music, with measure numbers 8, 14, 19, 25, 29, and 34 indicated at the beginning of their respective staves. The music features a mix of eighth and sixteenth notes, with some passages involving triplets and sixteenth-note runs. The movement concludes with a final cadence marked Adagio.

Adagio

Musical score for the second movement of the Sonata in C minor, Bass part, starting with Allegro. The score is written in bass clef with a key signature of two flats (C minor) and a common time signature (C). The tempo is marked Allegro. The score consists of three staves of music, with measure numbers 5 and 10 indicated at the beginning of their respective staves. The music is characterized by a driving eighth-note rhythm, with frequent sixteenth-note runs and triplets. The movement concludes with a final cadence.

*) Vgl. S. 2 ff.

15

20

25

31

37

43

49

54

59

64

72

Andante



6



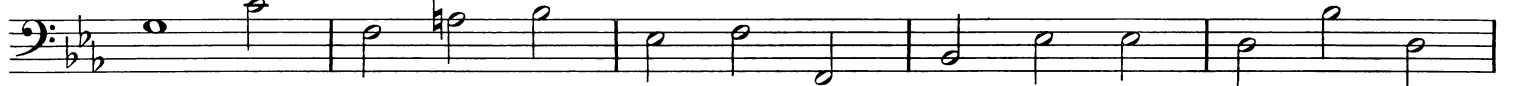
11



16



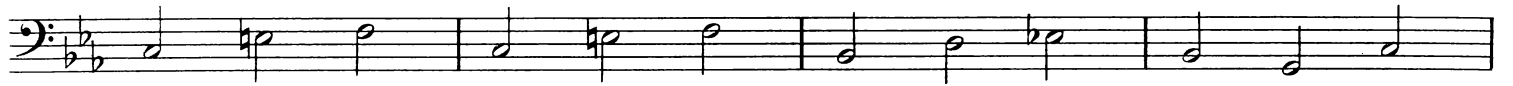
21



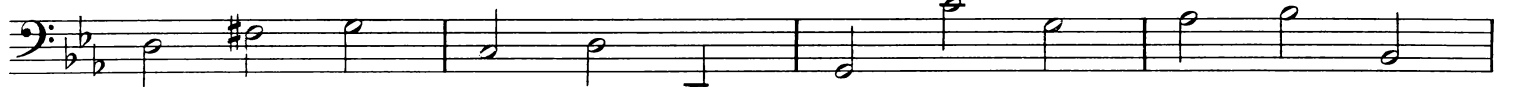
26



31



35



39



Allegro

staccato



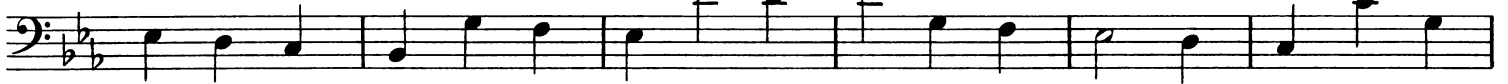
8



15



21



27



33



39



46



53



Basso

