

Antonio Salieri (1750 - 1825)

SINFONIA in RE

"Giorno onomastico,,
per orchestra da camera

Revisione di RENZO SABATINI

Allegro, quasi Presto

OBOE II.

The musical score for Oboe II consists of ten staves of music. The key signature is two sharps (F# and C#), and the time signature is 2/4. The score includes various dynamics such as *f*, *p*, *mf*, *sf*, and *tr* (trills). Measure numbers 5, 10, 15, 20, 25, 30, 35, 40, and 45 are indicated at the beginning of their respective staves. The music features a mix of eighth and sixteenth notes, with some measures containing trills and triplets.

2 50 55

P dolce *sf*

sf *sf*

60 65

sf *f*

70

p *triumm*

75

triumm

80

f

85 90 95 100

ff

Ob. I. *p* 105

p

110 Ob. I.

Ob. I.

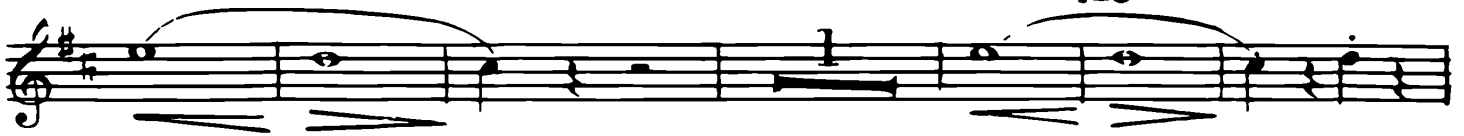
115

p

120

125

3



130

135



140



145



150



155

160



165

170

175

Trombe

180



185



190



195



LARGHETTO - TACE

MINUETTO
Non tanto Allegro 310

310

315

320

325

330

335

340

Fine

TRIO

340

345

350

I.

II.

Minuetto D.C.

Allegretto e sempre
l'istesso tempo

5

355 360 Fag. I. 365

(Crni)

ff

370

375

380

385

390

395

400

405

410

415

420

fl. *p.*

425

6

Sempre lo stesso movimento

First musical staff, starting with a treble clef and a key signature of one sharp (F#). It begins with a dynamic marking of *f* (forte). The melody consists of eighth and sixteenth notes, some beamed together, with a slur over the first four notes.

Second musical staff, continuing the melody. It features a measure rest followed by a series of sixteenth notes. A measure number **430** is printed above the staff.

Third musical staff, continuing the melody. It ends with a dynamic marking of *p* (piano).

Fourth musical staff, continuing the melody. A measure number **435** is printed above the staff.

Fifth musical staff, continuing the melody with various rhythmic patterns and slurs.

Sixth musical staff, starting with a measure rest and a dynamic marking of *f* (forte). A measure number **440** is printed above the staff.

Seventh musical staff, continuing the melody with sixteenth-note passages.

Eighth musical staff, continuing the melody. It ends with a dynamic marking of *p* (piano). A measure number **445** is printed above the staff.

Ninth musical staff, continuing the melody. It starts with a dynamic marking of *f* (forte). A measure number **450** is printed above the staff.

Tenth musical staff, continuing the melody with sixteenth-note passages.

455

460 465 470 475

480 485 490

495 500

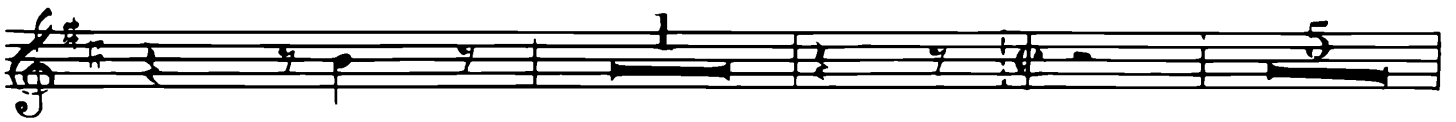
505

510

515

520

525



535

Crni

Fag I



540



545

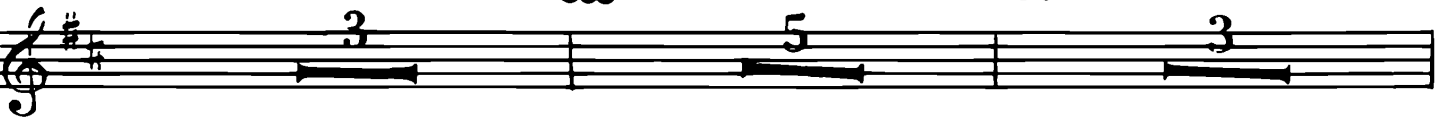


550



555

560



a tempo

565



570

