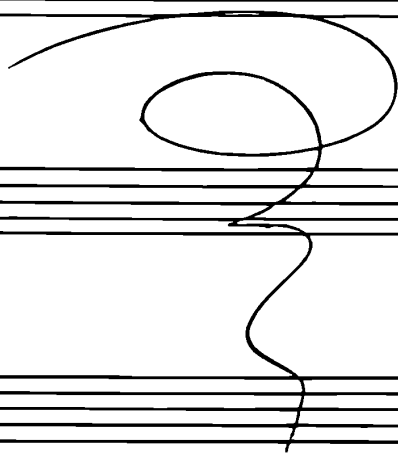


Violino 2^o # 1

Preludio, Corale e Fuga



D. Respighi

Preludio

Lento $\frac{4}{4}$ *Con sordina* $\frac{2}{4}$ *Presto*

pp. legg.

Segue

mi

(4)

ff

pp.

(2)

3

(3)

Via Jordina

V. S.

pp

f. *piu.* *arco* *ff*

cres: *f.* *mf.*

mf.

pp. sul ponticello

Cres = a poco a poco

low

Cres. - - - - -

rit. molto

Corale

Lento

Segue

(6)

p. espress.

IV.^a e.

divisi

Cres.

dim.

(7)

5

p.

cres.

f.

p.

121

A Tempo

Con Sordina

Lento assai

(8) *pp.*
Con Sordino

m. f.

insieme

Sm.

unite
pp.
pizz.
Via Sordino

8

= Fuga = (9)

Handwritten musical notation on a single staff. It begins with a treble clef, a key signature of one sharp (F#), and a 4/4 time signature. The tempo marking "All." is written below the staff. The music consists of a series of eighth and sixteenth notes, some with accents.

Handwritten musical notation on a single staff. It features a complex rhythmic pattern with many beamed notes. There are markings "2 1 2 3" below the first few notes, and "9P" and "8P" below later notes. The staff ends with a double bar line.

Handwritten musical notation on a single staff. It continues the melodic line with various note values and rests. There are some handwritten annotations like "tr" and "v" above the notes.

Handwritten musical notation on a single staff. It shows a continuation of the piece with more intricate rhythmic figures and some slurs.

Handwritten musical notation on a single staff. It consists of a series of eighth notes, some with slurs and accents.

Handwritten musical notation on a single staff. It features a sequence of notes with some accidentals and a "res." marking below the staff.

Handwritten musical notation on a single staff, starting with a large "(10)" in the left margin. It shows a series of notes, some with slurs and accents.

Handwritten musical notation on a single staff. It contains a complex rhythmic passage with many beamed notes and slurs.

Handwritten musical notation on a single staff. It features a series of notes with some slurs and a "f." marking below the staff.

Handwritten musical notation on a single staff, starting with a large "(11)" in the left margin. It shows a series of notes with slurs and a "3" marking at the end of the staff.

p. *res.*

f. *rit.*

Meno molto (12) *res.*

res.

f. *anim.*

rit. *dim.*

rit. *f.* (13)

(14)

pp. *piu:* *cr.*

(15)

Tempo *pp.* *legg.* *piu:* *dim.* *Molto fort.* *arco*

(16)

pp. *cr.* *f.*

Handwritten musical notation on a single staff. The notation includes a treble clef, a key signature of one flat (B-flat), and a time signature of 6/8. The music features a series of eighth and sixteenth notes, with some slurs and dynamic markings. The word "res." is written below the staff.

Handwritten musical notation on a single staff. The notation includes a treble clef, a key signature of one flat, and a time signature of 6/8. The music features a series of eighth and sixteenth notes, with some slurs and dynamic markings.

Handwritten musical notation on a single staff. The notation includes a treble clef, a key signature of one flat, and a time signature of 6/8. The music features a series of eighth and sixteenth notes, with some slurs and dynamic markings.

Handwritten musical notation on a single staff. The notation includes a treble clef, a key signature of one flat, and a time signature of 6/8. The music features a series of eighth and sixteenth notes, with some slurs and dynamic markings.

Handwritten musical notation on a single staff. The notation includes a treble clef, a key signature of one flat, and a time signature of 6/8. The music features a series of eighth and sixteenth notes, with some slurs and dynamic markings.

Handwritten musical notation on a single staff. The notation includes a treble clef, a key signature of one flat, and a time signature of 6/8. The music features a series of eighth and sixteenth notes, with some slurs and dynamic markings.

Handwritten musical notation on a single staff. The notation includes a treble clef, a key signature of one flat, and a time signature of 6/8. The music features a series of eighth and sixteenth notes, with some slurs and dynamic markings. The word "rit." is written below the staff.

Handwritten musical notation on a single staff. The notation includes a treble clef, a key signature of one flat, and a time signature of 2/2. The word "Presto" is written below the staff, followed by a large circled number "17".

V. G.

Empty musical staff.

Empty musical staff.

(18)

Piu mosso

cred.

rit.

rit.

Largamente

(19)

(20)

Handwritten musical notation on a single staff. It begins with a treble clef and a key signature of one flat. The first measure contains a half note G4, followed by a half note F4. A dynamic marking *dim.* is written below the first measure. The staff ends with a double bar line.

Handwritten musical notation on two staves. The tempo marking *Lento Assai* is written on the left. The music consists of eighth notes with slurs, forming a descending melodic line across both staves. The notation is written in a fluid, handwritten style.

Handwritten musical notation on two staves, continuing the melodic line from the previous system. It features eighth notes with slurs, maintaining the descending contour.

Handwritten musical notation on two staves. The music continues with eighth notes and slurs. A dynamic marking *dim.* is written below the second measure of the second staff. The system concludes with a *trist.* marking and a double bar line.

Handwritten musical notation on two staves, continuing the melodic line. It features eighth notes with slurs, ending with a double bar line.

Two empty musical staves at the bottom of the page, consisting of five-line systems.

Handwritten musical notation for two staves. The top staff contains a melodic line with slurs and accents. The bottom staff contains a bass line with slurs and a 'Vruff' marking.

Metà dei Violino

Handwritten musical notation for two staves. The top staff has a melodic line with a 'ppp' dynamic marking. The bottom staff has a 'Vruff' marking and a '(21) ppp il più possibile' instruction.

Handwritten musical notation for two staves. The top staff has a melodic line with a 'v' marking. The bottom staff has a 'cres.' marking and a 'mf. cres.' marking.

Handwritten musical notation for two staves. The top staff has a melodic line with slurs and accents. The bottom staff has a 'Vruff' marking.