

## Vier Sonaten für Blockflöte und bezifferten Baß

Blockflöte  
Querflöte/Violine

## SONATE I

G. F. Händel

(1685-1759)

herausgegeben von W. Woehl

Larghetto



Andante



31

39

44

48

54

Adagio

Presto

8

14

20

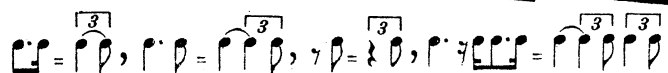
27

# SONATE II

Larghetto \*)

Allegro

\*)Dieser Satz, in einer älteren italienischen Notationsmanier aufgezeichnet, ist als 9/8-Takt zu spielen:  
 Copyright 1939 by C. F. Peters. International Copyright secured.



## Adagio

Musical score for the Adagio section, measures 1 through 13. The music is written in treble clef with a key signature of one flat (B-flat) and a common time signature (C). The tempo is marked Adagio. The score includes various musical notations such as slurs, accents, and trills (tr). Measure numbers 5, 9, and 13 are indicated in boxes on the left side of the staves.

## Allegro

Musical score for the Allegro section, measures 14 through 46. The music is written in treble clef with a key signature of one flat (B-flat) and a common time signature (C). The tempo is marked Allegro. The score includes various musical notations such as slurs, accents, and trills (tr). Measure numbers 5, 11, 16, 21, 27, 32, 37, 42, and 46 are indicated in boxes on the left side of the staves.

## SONATE III

Larghetto

5

9

13

17

21

Adagio

Allegro

10

19

26

35

44

55

63

74

85

96

107

116

125

Larghetto

4

13

24

34

A tempo di Gavotti

Musical score for 'A tempo di Gavotti' in 3/8 time. The score consists of seven staves of music. The first staff begins with a treble clef and a key signature of one sharp (F#). The music is characterized by rhythmic patterns of eighth and sixteenth notes, often grouped in beams. There are repeat signs and first/second endings. Measure numbers 6, 12, 19, 25, 31, and 39 are indicated at the start of their respective staves. The piece concludes with a double bar line and repeat dots.

Musical score for 'Allegro' in 3/8 time. The score consists of seven staves of music. The first staff begins with a treble clef and a key signature of one sharp (F#). The tempo is marked 'Allegro'. The music features a prominent use of trills, indicated by 'tr' above notes. There are also accents and slurs. Measure numbers 8, 17, 27, 37, 47, and 55 are indicated at the start of their respective staves. The piece concludes with a double bar line and repeat dots.

# SONATE IV

Larghetto



Allegro





Siciliana

Musical score for the first section, 'Siciliana', in 12/8 time. It consists of three staves of music. The first staff contains measures 1 through 7. The second staff begins with a measure number '4' in a box and contains measures 8 through 11. The third staff begins with a measure number '8' in a box and contains measures 12 through 15. The music features a melodic line with various ornaments, including trills (tr.) and grace notes (+).

Allegro

Musical score for the second section, 'Allegro', in 12/8 time. It consists of ten staves of music. The first staff contains measures 1 through 3. The second staff begins with a measure number '4' in a box and contains measures 4 through 6. The third staff begins with a measure number '7' in a box and contains measures 7 through 10. The fourth staff begins with a measure number '11' in a box and contains measures 11 through 13. The fifth staff begins with a measure number '14' in a box and contains measures 14 through 16. The sixth staff begins with a measure number '17' in a box and contains measures 17 through 19. The seventh staff begins with a measure number '20' in a box and contains measures 20 through 22. The eighth staff begins with a measure number '23' in a box and contains measures 23 through 25. The ninth staff begins with a measure number '26' in a box and contains measures 26 through 28. The music is characterized by a fast, rhythmic melody with many sixteenth notes.

Blockflöte in F

## SONATE I

G. F. Händel

(1685-1759)

herausgegeben von W. Woehl

Larghetto



Andante



31

39

44

48

54

Adagio

Presto

8

14

20

27



Blockflöte in F

Adagio

Musical score for the Adagio section, consisting of four staves of music. The first staff begins with a treble clef, a common time signature, and a key signature of one sharp (F#). The tempo is marked 'Adagio'. The music features a melodic line with various ornaments, including trills (tr) and accents (+). Measure numbers 5, 9, and 18 are indicated at the start of their respective staves.

Allegro

Musical score for the Allegro section, consisting of nine staves of music. The tempo is marked 'Allegro'. The music is more rhythmic and complex, featuring many sixteenth and thirty-second notes. It includes various ornaments such as trills (tr) and accents (+). Measure numbers 5, 11, 16, 21, 27, 32, 37, 42, and 46 are indicated at the start of their respective staves.

# SONATE III

Larghetto

5

9

13

17

21

Adagio

Allegro

10

19

26

35

44

55

63

74

85

96

107

116

125

Larghetto

18

24

34

# Blockflöte in F

A tempo di Gavotti





# SONATE IV

Larghetto

Musical score for the first section, marked "Larghetto". It consists of five staves of music in 3/4 time. The first staff begins with a treble clef and a key signature of one flat. The music features a mix of quarter, eighth, and sixteenth notes, with some rests and dynamic markings. Measure numbers 10, 20, 28, and 36 are indicated in small boxes on the left margin. Trills are marked with "tr" and accents with "+" above notes.

Allegro

Musical score for the second section, marked "Allegro". It consists of seven staves of music in common time (C). The first staff begins with a treble clef and a key signature of one flat. The music is more rhythmic and includes several trills marked with "tr". Measure numbers 5, 8, 11, 14, 19, 22, and 25 are indicated in small boxes on the left margin. The section concludes with a double bar line and repeat dots.

Siciliana

Musical score for Siciliana, measures 1-8. The piece is in 12/8 time. Measures 1-4 are marked with a '4' in a box. Measures 5-8 are marked with an '8' in a box. Trills (tr) are indicated above notes in measures 6 and 8. Accents (+) are placed above notes in measures 2, 3, and 5.

Allegro

Musical score for Allegro, measures 1-26. The piece is in 12/8 time. Measures 1-4 are marked with a '4' in a box. Measures 5-7 are marked with a '7' in a box. Measures 8-10 are marked with an '11' in a box. Measures 11-13 are marked with a '14' in a box. Measures 14-16 are marked with a '17' in a box. Measures 17-19 are marked with a '20' in a box. Measures 20-22 are marked with a '23' in a box. Measures 23-26 are marked with a '26' in a box. The score includes various rhythmic patterns and dynamics.

Violoncello

# SONATE I

G. F. Händel  
(1685 - 1759)

herausgegeben von W. Woehl

Larghetto

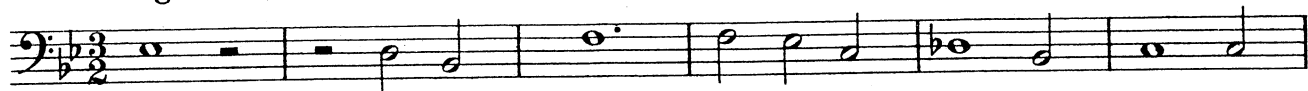


Andante

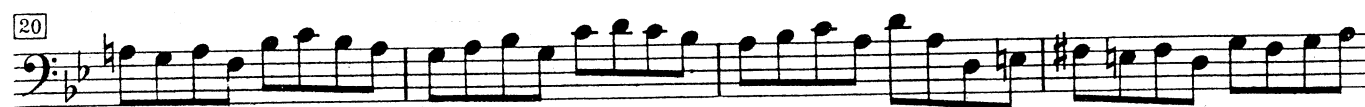
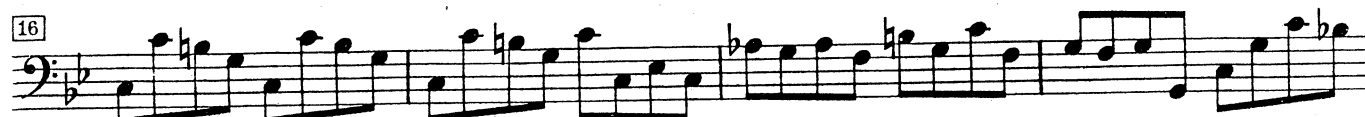


# Violoncello

Adagio



Presto





## Violoncello

Allegro

Violoncello score for Allegro, measures 1-35. The score is written in bass clef with a common time signature (C). The music features a complex rhythmic pattern, primarily consisting of eighth and sixteenth notes, often beamed together in groups. The key signature is one sharp (F#), indicating the key of D minor or B major. The score is divided into measures, with measure numbers 4, 7, 10, 13, 16, 19, 23, 26, 29, 32, and 35 marked in boxes at the beginning of their respective lines. The piece concludes with a double bar line and repeat dots at the end of measure 35.

Violoncello

Adagio

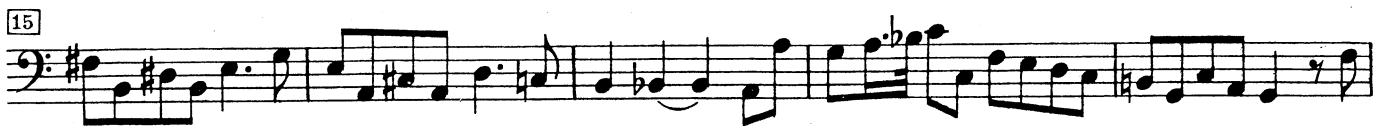


Allegro



## SONATE III

Larghetto



Allegro







Violoncello

A tempo di Gavotti

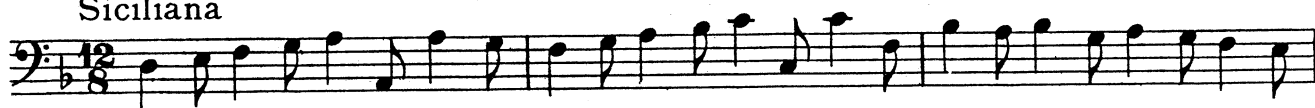
Musical score for Violoncello, A tempo di Gavotti. The score consists of six staves of music in bass clef, 2/4 time signature. The first staff starts with a treble clef and a common time signature. The music is marked with measure numbers 1, 8, 16, 23, 31, and 38. The key signature has one sharp (F#).

Allegro

Musical score for Violoncello, Allegro. The score consists of ten staves of music in bass clef, 3/8 time signature. The music is marked with measure numbers 1, 11, 19, 26, 33, 40, 47, and 57. The key signature has one sharp (F#).



## Siciliana



## Allegro

