

Batteria

РОМЕО И ДЖУЛЬЕТТА

ТРЕТЬЯ СЮИТА

С. Прокофьев

1. Ромео у фонтана

tacet

2. Утренний танец

6 Allegro

legno

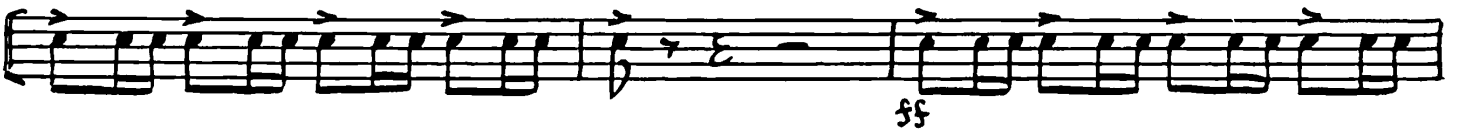
7 8

Simp. 3 S. mil.

9 Poco meno 6 P-no, Azpe 2

Sag. a 2 piatti

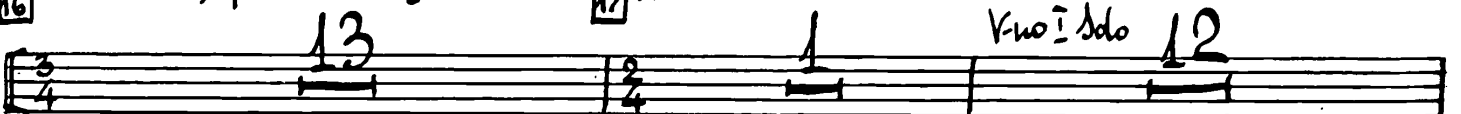
2 10 S. mil.



3. Джульетта

16 Moderato, quasi allegretto

17 Andante dolce



18 Fl. I 2 poco ritard. 19 Allegretto Corni 8 3

20 Arpe 8 21 13 22 3

Simp. 4 accelerando V. ni I 4 23 Andante dolce Cl. 8

24 8 25 Fl. az 6 poco rit. 2 13/4

26 Moderato, quasi allegretto 9 27 C. ingl. 5

2 2 Camp. p

cassa | ε | ε

4. Кормилица

28 Andante assai. scherzando 8 29 Simp. 8 30 Sno 1

P-no, Arpe 9 Ob. I do 31

Camp. $b\bar{p}$ $b\bar{f}$ 2

$b\bar{f}$ $b\bar{f}$ 32 7

5. Утренняя серенада

33 Andante giocoso

Самп.

Musical staff for measure 33, featuring a treble clef, a 2/4 time signature, and a 7-measure rest. A dynamic marking of *p* is present below the staff.

34

Трианг.

Two musical staves for measures 34 and 35. The top staff is for the Triangle (Трианг.) and the bottom for the Campana (Самп.). Measure 34 includes a *pp* dynamic marking. Measure 35 includes a *p* dynamic marking.

Two musical staves for measures 36 and 37. The top staff continues the Triangle part, and the bottom staff continues the Campana part. Measure 37 includes a *p* dynamic marking.

35

Самп.

Musical staff for measure 35, featuring a treble clef, a 3-measure rest, and a 4-measure rest. A dynamic marking of *mp* is present below the staff.

36 32-be

Трианг.

Two musical staves for measures 37 and 38. The top staff is for the Triangle (Трианг.) and the bottom for the Campana (Самп.). Measure 37 includes a *pp* dynamic marking. Measure 38 includes a *p* dynamic marking.

Two musical staves for measures 39 and 40. The top staff continues the Triangle part, and the bottom staff continues the Campana part.

Two empty musical staves at the bottom of the page.

39

Musical staff with notes and dynamics. It starts with a treble clef and a key signature of one sharp (F#). The first measure has a whole note G4 with a dynamic marking of *p*. The second measure has a quarter note A4 with an accent (>) and a dynamic marking of *p*. The third measure has a whole note B4 with a dynamic marking of *mp*. The fourth measure has a whole note C5 with a dynamic marking of *mp*. There are rests in the first and second staves.

Musical staff with notes and dynamics. It starts with a treble clef and a key signature of one sharp (F#). The first measure has a whole note D5 with a dynamic marking of *p*. The second measure has a whole note E5 with a dynamic marking of *p*. The third measure has a whole note F#5 with a dynamic marking of *mp*. The fourth measure has a whole note G5 with a dynamic marking of *mp*. There are rests in the first and second staves.

Musical staff with notes and dynamics. It starts with a treble clef and a key signature of one sharp (F#). The first measure has a whole note A5 with a dynamic marking of *p*. The second measure has a whole note B5 with a dynamic marking of *pp*. The third measure has a whole note C6 with a dynamic marking of *pp*. The fourth measure has a whole note D6 with a dynamic marking of *pp*. There are rests in the first and second staves.

Б. СМЕРТЬ ДЖУЛЬЕТТЫ

tacet

