

Antonio Salieri (1750 - 1825)

SINFONIA in RE

"Giorno onomastico,"
per orchestra da camera

Revisione di RENZO SABATINI

CORNO I.
in Fa

Allegro, quasi Presto

The musical score for Horn I in F consists of ten staves of music. The first staff begins with a treble clef, a key signature of one sharp (F#), and a 2/4 time signature. The tempo is marked 'Allegro, quasi Presto'. The first measure starts with a forte (f) dynamic. The score includes various dynamics such as mezzo-forte (mf), sfz, and piano (p). There are several accents and slurs throughout. Measure numbers 5, 10, 15, 20, 25, 30, 35, 40, and 45 are indicated at the beginning of their respective staves. The final measure of the page is marked with a '5' above it, indicating the end of the excerpt.

2

50

55

3

p

60

65

70

f

75

p

80

f

85

poco sost.

ff

a tempo

90

95

100

105

110

5

3

p

115

4

1

p

120

125

130

135

140



145



150

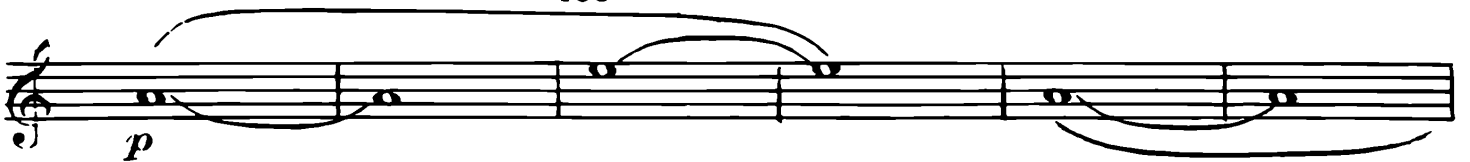


155

160



165



170

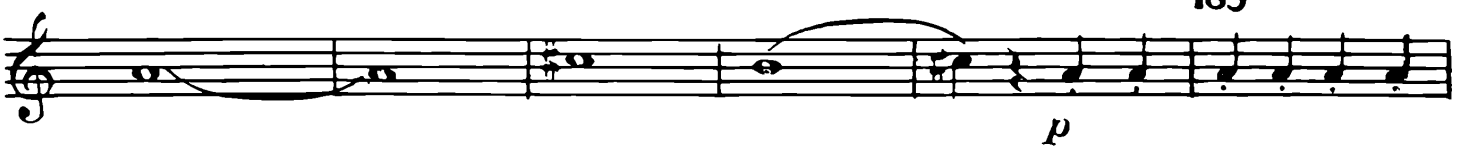


175



180

185



190



195



LARGHETTO TACE

MINUETTO
Non tanto allegro

310

mf

315

p

320

325

mf

330

mf

335

Fine

TRIO

340

345

350

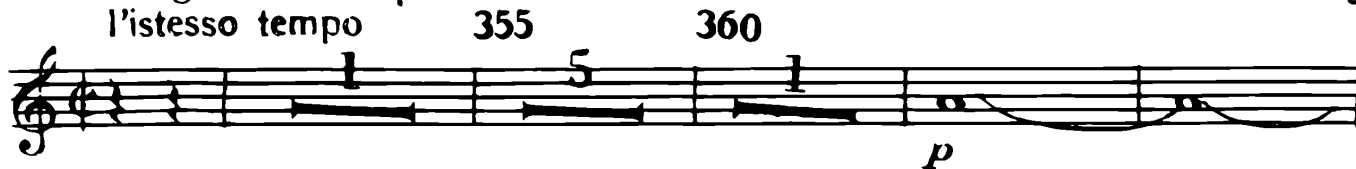
I. II.

Minuetto D.C.

Allegretto e sempre
l'istesso tempo

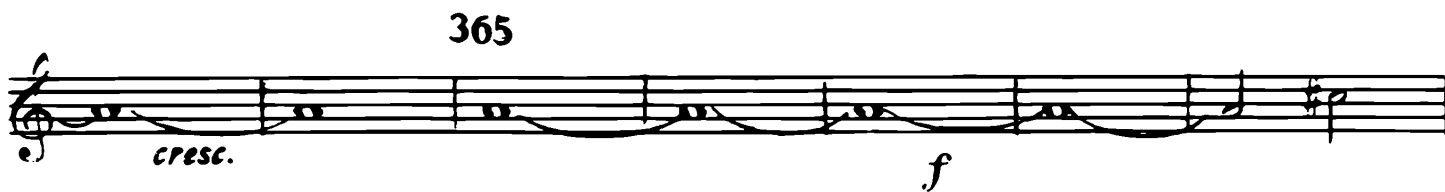
5

355 360



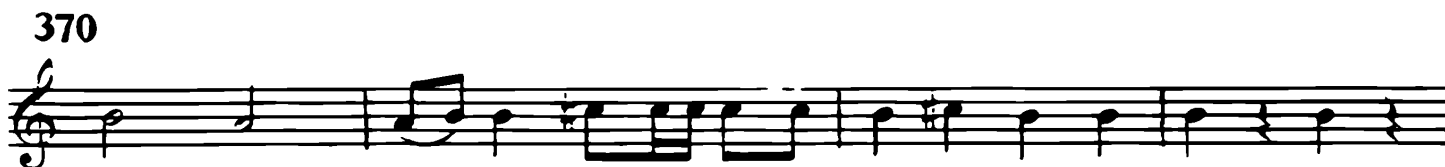
p

365

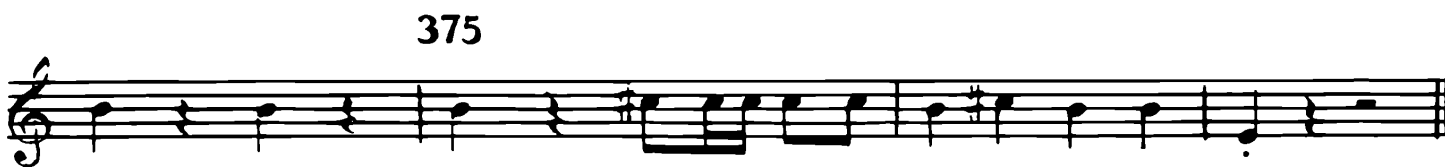


cresc. *f*

370



375



495

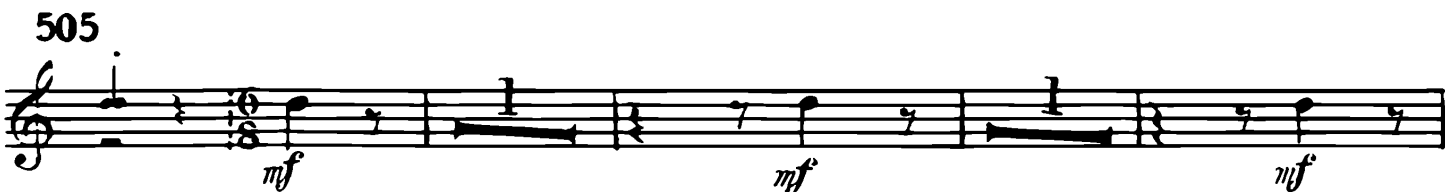


ff?

500

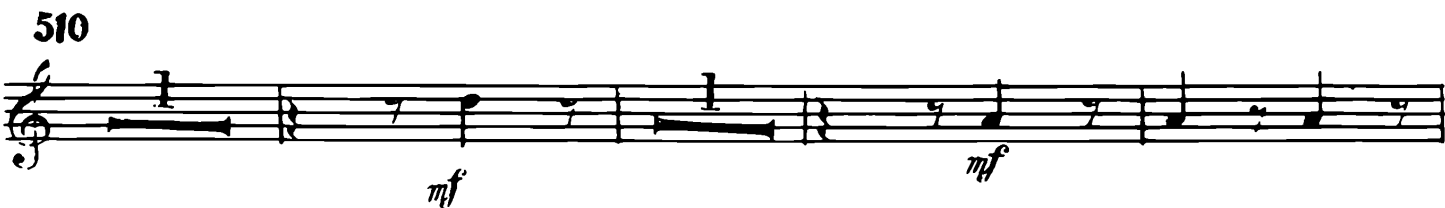


505



mf *mf* *mf*

510



mf *mf*

515



6

520

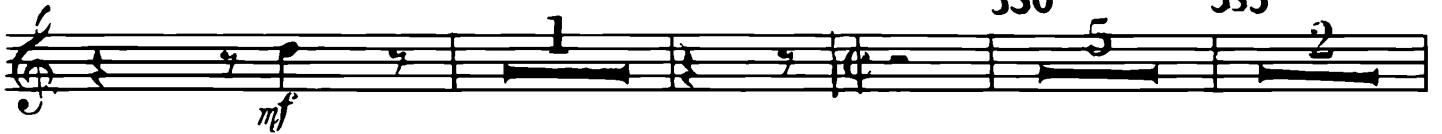


525



530

535



540



545



550

555

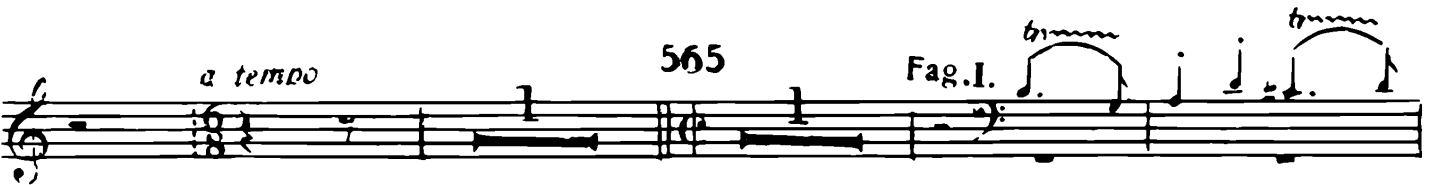
560



a tempo

565

Fag. I.



570

