

*For the Japanese Dancer, Michio Ito*

# Japanese Suite

Op. 33  
1915

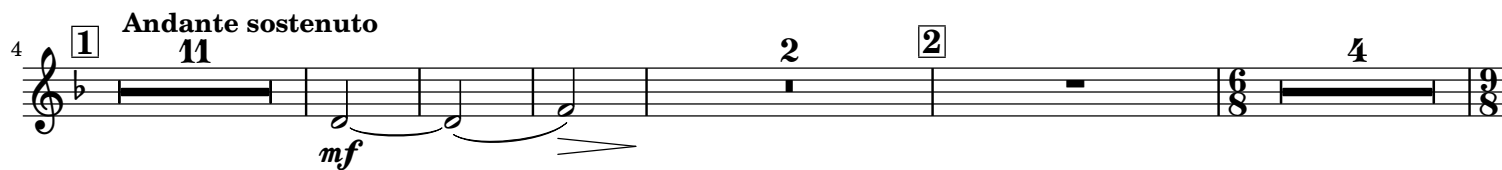
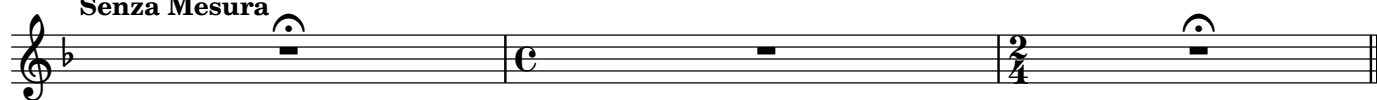
*Gustav Holst*

Charles Woodhouse (1879-1939)

Flute II

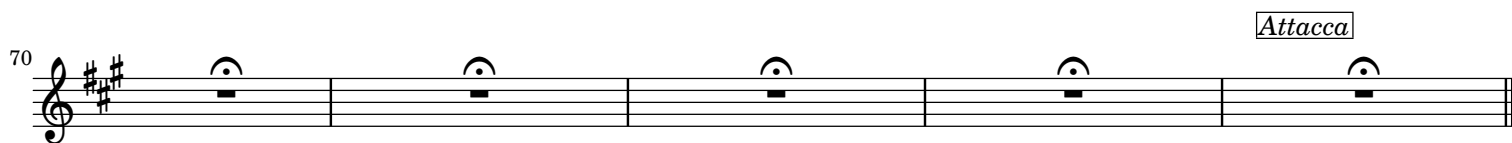
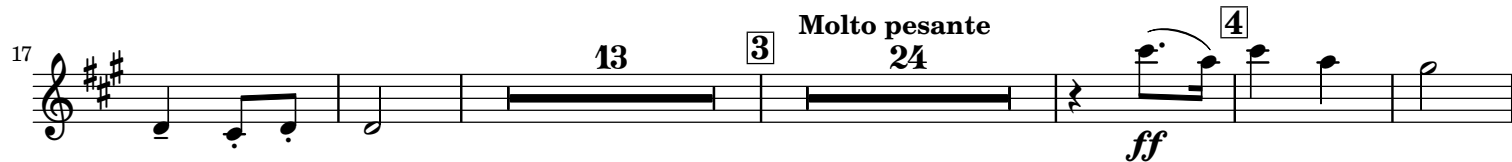
2 Flute II  
**Prelude - Song of the Fisherman**

Senza Mesura



**I - Ceremonial Dance**

Allegretto quasi Andante



# II - Dance of the Marionette

*Allegretto con spirito*

Musical score for 'Dance of the Marionette' in 6/8 time, key of B-flat major. The score consists of three staves. The first staff starts with a treble clef and a key signature of two flats. It features a series of rests with durations of 19, 5, 12, 6, and 16 measures. The second staff begins at measure 48 and contains rests of 7, 12, 8, and 20 measures, followed by a 'Moderato' section with a 4-measure rest. The third staff starts at measure 85 and contains four whole rests, with the word 'Attacca' written above the staff.

# Interlude - Song of the Fisherman

*Andante*

Musical score for 'Song of the Fisherman' in 3/4 time, key of B-flat major. The score consists of three staves. The first staff begins with a treble clef and a key signature of two flats. It features a melodic line with triplets of eighth notes, marked with a piano (*p*) dynamic. The second staff continues the melody, marked with a forte (*f*) dynamic. The third staff starts at measure 7, includes a 'rit.' (ritardando) marking, and ends with a piano (*p*) dynamic and a 'p' (pizzicato) marking. The word 'Attacca' is written above the staff.

# III - Dance Under the Cherry Tree

*Lento*

Musical score for 'Dance Under the Cherry Tree' in common time (C), key of B-flat major. The score consists of one staff. It features a series of rests with durations of 17, 9, 19, and 3 measures, followed by a whole rest. The tempo marking 'Lento' is above the first rest, and 'Morendo' is above the third rest. The word 'Attacca' is written above the final rest.

# IV - Finale - Dance of the Wolves

*Allegro agitato*

Musical score for 'Dance of the Wolves' in 2/4 time, key of B-flat major. The score consists of two staves. The first staff begins with a treble clef and a key signature of two flats. It features a series of rests with durations of 10, 3, and 7 measures, followed by a quarter rest. The tempo marking 'Allegro agitato' is above the first rest, and a forte (*f*) dynamic is below the first rest. The second staff starts at measure 18 and contains rests of 10, 3, and 7 measures, followed by a quarter rest. The dynamic marking 'ff' (fortissimo) is below the first rest.

acc. e cresc. **11** poco a poco al Fine **12** **12** Allegretto *p*

**13** Più mosso **14** Allegro *f*

**15** Vivace **6** *mf cresc.*

**16** accelerando *f*

**17** Presto *8va* *ff*

**18** Animato *8va*

31

48 *cresc.*

55

74

85

89

92

96

100

104