

# TWO POEMS

of BALMONT

IGOR STRAWINSKY

Pianoforte

I

## THE FLOWER

M.M. ♩ = 84

(Voice)

Musical notation for the voice part of 'The Flower'. It consists of a single staff with a treble clef and a 4/8 time signature. The melody is written with eighth and sixteenth notes, some with slurs and accents. The accompaniment in the bass clef consists of simple chords and rests.

**A**

Musical notation for section A of the piano accompaniment. It features a treble clef staff with a 4/8 time signature. The melody is marked with accents and slurs. The bass clef staff provides harmonic support with chords. The tempo marking 'Piu mosso' is written below the staff.

*marc. in p*

*Piu mosso*

**B**

Musical notation for section B of the piano accompaniment. It features a treble clef staff with a 4/8 time signature. The melody is marked with accents and slurs. The bass clef staff provides harmonic support with chords. The tempo marking 'Piu mosso' is written below the staff.

*left Ped.*

**C**

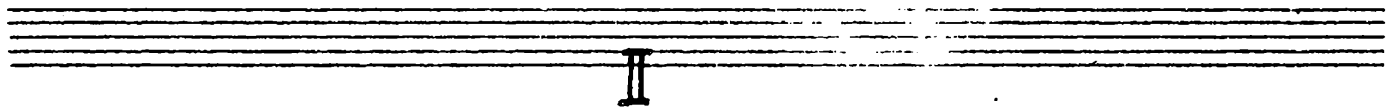
Musical notation for section C of the piano accompaniment. It features a treble clef staff with a 4/8 time signature. The melody is marked with accents and slurs. The bass clef staff provides harmonic support with chords. The tempo marking 'Piu mosso' is written below the staff.

G.P.

4/8  
4/8

**D** Tempo I (Voice)

**E**



II

THE DOVE

M.M. ♩: 104

(In 8)

*leggierissimo*

**A**

Piano forte

**B**

Musical notation for system B, consisting of two staves. The upper staff has a treble clef and contains a whole note chord with a sharp sign. The lower staff has a bass clef and contains a whole note chord with a sharp sign. A slur spans across both staves. The annotation "(in 4)" is written above the lower staff. A large number "2" is written above the lower staff.

**C**

Musical notation for system C, consisting of two staves. The upper staff has a treble clef and contains a series of notes and chords. The lower staff has a bass clef and contains a series of notes and chords. A slur spans across both staves. The annotation "(b)" is written above the upper staff. A large number "2" is written above the lower staff. The dynamic marking "mf" is written below the lower staff. The dynamic marking "p" is written below the lower staff. The dynamic marking "poco sf" is written below the lower staff. The annotation "(Fi. I.)" is written below the lower staff.

Musical notation for system D, consisting of two staves. The upper staff has a treble clef and contains a series of notes and chords. The lower staff has a bass clef and contains a series of notes and chords. A slur spans across both staves. The annotation "(Fi. I.)" is written below the lower staff.

Musical notation for system E, consisting of two staves. The upper staff has a treble clef and contains a series of notes and chords. The lower staff has a bass clef and contains a series of notes and chords. A slur spans across both staves. The annotation "poco sf" is written below the lower staff. The number "1" is written below the lower staff.

Empty musical staff consisting of two staves.

Empty musical staff consisting of two staves.

Empty musical staff consisting of two staves.

Empty musical staff consisting of two staves.