

E. J. MOERAN



ROSALINE

Poem by

THOMAS LODGE

PRICE 2/- NET

WINTHROP ROGERS

EDITION

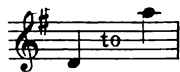
BOOSEY & HAWKES, LTD.
295 REGENT STREET
LONDON, W.1

BOOSEY, HAWKES, BELWIN, INC.
43-47, WEST 23RD STREET,
NEW YORK CITY

EDITIONS HAWKES.
16 RUE DU FAUBG ST DENIS
PARIS, 10^E

BOOSEY & HAWKES (Aust) PTY LTD
NATIONAL BUILDING 250 PITT STREET
SYDNEY

Rosaline



Poem by
THOMAS LODGE
(1558 - 1625)

Music by
E. J. MOERAN

VOICE *Con moto*

Like.... to the clear in

PIANO *mp*

high - est sphere Where all im - per - ial glo - ry shines, Of self - same col - our

is her hair... Wheth - er un - fold - ed or in twines: Heigh - ho,

fair Ro - sa - line!..... Her eyes are sapph-ires set in snow, Re -

p *mp*

-pin-ing hea-ven by ev -'ry wink; The gods do fear....when - as they glow, And

mf

I do trem - ble when I think: Heigh - ho, Heigh - ho,

would she were mine!..... Her

p *pp* *p*

Red. *

cheeks are like the blushing cloud That beauti-fies.... Au-ro-ra's face, Or

like the sil-ver crim-son shroud That Phoe-bus' smil-ing looks doth grace:

Heigh-ho, fair Ro-sa-line!..... Her lips are like.... two

bud-ded ro-ses Whom ranks of lil-ies neighbour nigh, With-in whose bounds she

balm en - clos - es Apt to en-tice a de - i - ty: Heigh - ho,

Heigh - ho, would she...were mine!..... With

or-ient pearl, with ru-by red,...With mar-ble white, with sapph-ire blue, Her

bo - dy ev - 'ry way is fed,... Yet soft in touch and sweet in view:

Heigh - ho, fair Ro - sa - line!..... Na - ture her - self.... her

shape ad - mires; The gods are wound - ed in her sight; And Love for - sakes his

heav'n-ly fires And at her eyes his brand doth light: Heigh - ho,

Heigh - ho, would she.... were mine!..... Then

muse not, Nymphs, though I be - moan... The ab - sence of fair Ro - sa - line, Since

for her fair...there's fair - er none, Nor for her vir - tues so di - vine:

Heigh - ho, fair Ro - sa - line!..... Heigh - ho,

poco rall. - - - allargando *mp a tempo*

my heart! would.....God.....that she..were mine!.....

C. ARMSTRONG GIBBS

SONGS and DUETS

TITLE.	AUTHOR.	KEYS.	PRICE.
As I lay in the early sun	<i>Edward Shanks</i>	F	2/-
Ballad-Maker (A)	<i>Padraic Colum</i>	C minor	2/-
Dream Song	<i>Walter de la Mare</i>	A \flat	2/-
February	<i>Mordaunt Currie</i>	A minor	2/-
Fields are full (The)	<i>Edward Shanks</i>	E \flat minor	2/-
Five Children's Songs (From "Peacock Pie")			
1. The Barber's. 2. Miss T. 3. Old Shellover. 4. Hide and Seek.			
5. Then	<i>Walter de la Mare</i>	Medium Voice	2/6
Five Eyes	<i>Walter de la Mare</i>	G and B \flat (minor)	2/-
For Remembrance	<i>Edward Shanks</i>	D	2/-
Fulfilment	<i>Mordaunt Currie</i>	D	2/-
In the Woods in June	<i>Mordaunt Currie</i>	A	2/-
John Mouldy	<i>Walter de la Mare</i>	C minor	2/-
Juliet Anne	<i>Mordaunt Currie</i>	D	2/-
Little Green Orchard (The)	<i>Walter de la Mare</i>	F	2/-
Love's Prisoner	<i>William Blake</i>	B \flat and D	2/-
Love's Wisdom	<i>Mordaunt Currie</i>	A	2/-
Lyonese	<i>Thomas Hardy</i>	A and C (minor)	2/-
Maritime Invocation	<i>A. C. Boyd</i>	E \flat	2/-
Midnight	<i>Jeffery Lang</i>	D \flat	2/-
Nod	<i>Walter de la Mare</i>	D	2/-
Oh, Nightingale upon my Tree	<i>Mordaunt Currie</i>	B \flat	2/-
Old Wine in New Bottles	<i>Old English</i>	Baritone	2/6
<i>Four Restoration Songs.</i>			
Sailing Homeward	<i>Arthur Waley</i>	B \flat and D	2/-
Ship of Rio (The)	<i>Walter de la Mare</i>	E \flat	2/-
Silver	<i>Walter de la Mare</i>	E and F \sharp (minor)	2/-
Sledburn Fair	<i>Anonymous</i>	B \flat	2/-
Song of Shadows (A)	<i>Walter de la Mare</i>	E \flat	2/-
Sussex Ways	<i>Mordaunt Currie</i>	E \flat	2/-
Sweet sounds, begone	<i>Walter de la Mare</i>	B \flat minor	2/-
Three Men of Gotham (Duet)	<i>Thomas L. Peacock</i>	C	2/-
Titania	<i>Mordaunt Currie</i>	(b \flat -f)	2/-
Tom o' Bedlam	<i>Anonymous</i>	A minor	2/-
Two Songs			
(a) Down in yonder Meadow	<i>Old Rhyme</i>	D minor }	2/-
(b) Lily-Bright and Shine-a	"	E minor }	

PUBLISHED BY
BOOSEY & CO., LTD.

PUBLISHED IN
WINTHROP ROGERS EDITION

Sole Selling Agents: BOOSEY & HAWKES, LTD.

295 REGENT STREET, LONDON, W.1